



# VGA

## ISO 14541 - SCREW-TO-CONNECT COUPLINGS

Available other different threads on request

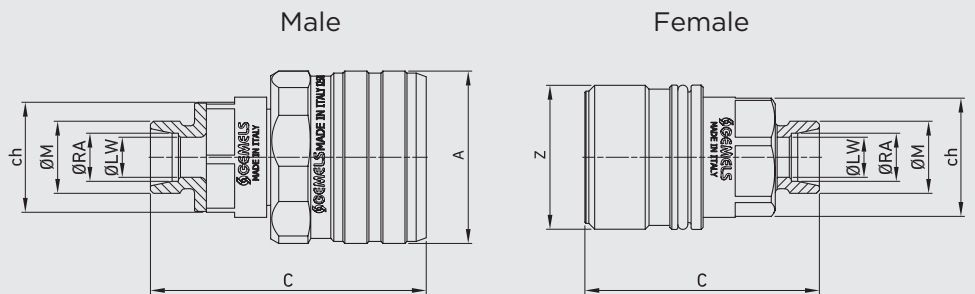
Edition. 21.4

### CS Carbon Steel

- Type: Quick Couplings
- Models: ISO 14541
- Sizes: from DN6 up to DN25
- Pressure: up to PN420
- Treatment: Galvanized

### SS Stainless Steel

- Type: Quick Couplings
- Models: ISO 14541
- Sizes: from DN6 up to DN25
- Pressure: up to PN420



Available also  
in patented version:  
ball valve with integrated  
quick coupling.



## CODE DESCRIPTION STRUCTURE

**QC** | **1/2** | **F/M** | **DN12,5** | **1** | **B**

**Type of coupling**

SCREW-TO-CONNECT-COUPLINGS ISO 14541

**Ends**

ISO 1179-1 BSPP	ISO 8434-1-S (DIN 2353)	ISO 8434-1-L (DIN 2353)	ISO 8434-1-S (DIN 2353) BULKHEAD	ISO 8434-1-L (DIN 2353) BULKHEAD
G1/4	6L	8S	10S	8L
G3/8	8L	10S	12S	10L
G1/2	10L	12S	16S	12L
G3/4	12L	14S	20S	15L
G1	15L	16S	25S	18L
	18L	20S	30S	22L
	22L	25S		28L
	28L	30S		
	35L			

MALE

FEMALE

**DN/ISO**

- 6,3
- 10
- 12,5
- 20
- 25

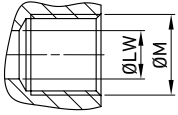
**Body Material**

- 1 = 1,0737
- 4 = 1,4404

**Seal material**

- B = NBR E = FKM\*
- E = FKM

\*On request  
• Plugs



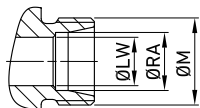
**SCREW-TO-CONNECT-COUPLINGS ISO 14541 (male / female)  
FEMALE THREAD ISO 1179-1 BSPP**

										CS Carbon Steel											SS Stainless Steel
TYPE	DN	PN	ØA	C	z	ch	ØM	WEIGHT	ITEM CODE	TYPE	DN	PN	ØA	C	z	ch	ØM	WEIGHT	ITEM CODE		
QC VGA G 1/4 MALE	6,3	MPa 42	mm 30	64	-	19	G1/4	kg 0,141	NC15G010000	QC VGA G 1/4 MALE	6,3	MPa 42	mm 30	64	-	19	G1/4	kg 0,141	NC15G01S000		
		Psi 6090	inch 1,18	2,52	-	0,75		lb 0,31				Psi 6090	inch 1,18	2,52	-	0,75		lb 0,31			
QC VGA G 1/4 FEMALE	6,3	MPa 42	mm -	60,5	M24X2	19	G1/4	kg 0,122	NC16G010000	QC VGA G 1/4 FEMALE	6,3	MPa 42	mm -	53	M24X2	19	G1/4	kg 0,122	NC16G01S000		
		Psi 6090	inch -	2,38		0,75		lb 0,27				Psi 6090	inch -	2,09		0,75		lb 0,27			
QC VGA G 3/8 MALE	10	MPa 42	mm 34	66,5	-	24	G3/8	kg 0,193	NC15G020000	QC VGA G 3/8 MALE	10	MPa 42	mm 34	66,5	-	24	G3/8	kg 0,193	NC15G02S000		
		Psi 6090	inch 1,34	2,62	-	0,94		lb 0,43				Psi 6090	inch 1,34	2,62	-	0,94		lb 0,43			
QC VGA G 3/8 FEMALE	10	MPa 42	mm -	60	M28X2	24	G3/8	kg 0,185	NC16G020000	QC VGA G 3/8 FEMALE	10	MPa 42	mm -	60	M28X2	24	G3/8	kg 0,185	NC16G02S000		
		Psi 6090	inch -	2,36		0,94		lb 0,41				Psi 6090	inch -	2,36		0,94		lb 0,41			
QC VGA G 1/2 MALE	10	MPa 42	mm 34	69	-	24	G1/2	kg 0,187	NC15G020001	QC VGA G 1/2 MALE	10	MPa 42	mm 34	69	-	24	G1/2	kg 0,187	NC15G02S001		
		Psi 6090	inch 1,34	2,72	-	0,94		lb 0,41				Psi 6090	inch 1,34	2,72	-	0,94		lb 0,41			
QC VGA G 1/2 FEMALE	10	MPa 42	mm -	62,5	M28X2	24	G1/2	kg 0,171	NC16G020001	QC VGA G 1/2 FEMALE	10	MPa 42	mm -	62,5	M28X2	24	G1/2	kg 0,171	NC16G02S001		
		Psi 6090	inch -	2,46		0,94		lb 0,38				Psi 6090	inch -	2,46		0,94		lb 0,38			
QC VGA G 3/8 MALE	12,5	MPa 42	mm 43	71	-	27	G3/8	kg 0,309	NC15G030000	QC VGA G 3/8 MALE	12,5	MPa 42	mm 43	71	-	27	G3/8	kg 0,309	NC15G03S000		
		Psi 6090	inch 1,69	2,80	-	1,06		lb 0,68				Psi 6090	inch 1,69	2,80	-	1,06		lb 0,68			
QC VGA G 3/8 FEMALE	12,5	MPa 42	mm -	60,5	M36X2	27	G3/8	kg 0,311	NC16G030000	QC VGA G 3/8 FEMALE	12,5	MPa 42	mm -	60,5	M36X2	27	G3/8	kg 0,311	NC16G03S000		
		Psi 6090	inch -	2,38		1,06		lb 0,69				Psi 6090	inch -	2,38		1,06		lb 0,69			
QC VGA G 1/2 MALE	12,5	MPa 42	mm 43	74	-	27	G1/2	kg 0,303	NC15G030001	QC VGA G 1/2 MALE	12,5	MPa 42	mm 43	74	-	27	G1/2	kg 0,303	NC15G03S001		
		Psi 6090	inch 1,69	2,91	-	1,06		lb 0,67				Psi 6090	inch 1,69	2,91	-	1,06		lb 0,67			
QC VGA G 1/2 FEMALE	12,5	MPa 42	mm -	63,5	M36X2	27	G1/2	kg 0,306	NC16G030001	QC VGA G 1/2 FEMALE	12,5	MPa 42	mm -	63,5	M36X2	27	G1/2	kg 0,306	NC16G03S001		
		Psi 6090	inch -	2,50		1,06		lb 0,67				Psi 6090	inch -	2,50		1,06		lb 0,67			
QC VGA G 3/4 MALE	20	MPa 42	mm 48	85	-	34	G3/4	kg 0,44	NC15G040000	QC VGA G 3/4 MALE	20	MPa 42	mm 48	85	-	34	G3/4	kg 0,44	NC15G04S000		
		Psi 6090	inch 1,89	3,35	-	1,34		lb 0,97				Psi 6090	inch 1,89	3,35	-	1,34		lb 0,97			
QC VGA G 3/4 FEMALE	20	MPa 42	mm -	84	M42X2	34	G3/4	kg 0,517	NC16G040000	QC VGA G 3/4 FEMALE	20	MPa 42	mm -	84	M42X2	34	G3/4	kg 0,517	NC16G04S000		
		Psi 6090	inch -	3,31		1,34		lb 1,14				Psi 6090	inch -	3,31		1,34		lb 1,14			
QC VGA G 3/4 MALE	25	MPa 35	mm 57	98,5	-	41	G3/4	kg 0,758	NC15G050000	QC VGA G 3/4 MALE	25	MPa 35	mm 57	98,5	-	41	G3/4	kg 0,758	NC15G05S000		
		Psi 5075	inch 2,24	3,88	-	1,61		lb 1,67				Psi 5075	inch 2,24	3,88	-	1,61		lb 1,67			
QC VGA G 3/4 FEMALE	25	MPa 35	mm -	95	M48X2	41	G3/4	kg 0,75	NC16G050000	QC VGA G 3/4 FEMALE	25	MPa 35	mm -	95	M48X2	41	G3/4	kg 0,75	NC16G05S000		
		Psi 5075	inch -	3,74		1,61		lb 1,65				Psi 5075	inch -	3,74		1,61		lb 1,65			
QC VGA G 1 MALE	25	MPa 35	mm 57	100,5	-	41	G1	kg 0,737	NC15G050001	QC VGA G 1 MALE	25	MPa 35	mm 57	100,5	-	41	G1	kg 0,737	NC15G05S001		
		Psi 5075	inch 2,24	3,96	-	1,61		lb 1,62				Psi 5075	inch 2,24	3,96	-	1,61		lb 1,62			
QC VGA G 1 FEMALE	25	MPa 35	mm -	97	M48X2	41	G1	kg 0,728	NC16G050001	QC VGA G 1 FEMALE	25	MPa 35	mm -	97	M48X2	41	G1	kg 0,728	NC16G05S001		
		Psi 5075	inch -	3,82		1,61		lb 1,60				Psi 5075	inch -	3,82		1,61		lb 1,60			





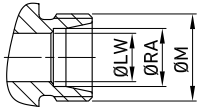




## SCREW-TO-CONNECT-COUPPLINGS ISO 14541 (male / female) MALE THREAD METRIC ISO 8434-1-S (DIN 2353)

Carbon Steel

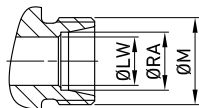
TYPE	DN	PN	ØA	C	z	ch	ØM	ØLW	ØRA	WEIGHT	ITEM CODE	
QC VGA 8S MALE	10	MPa 42	mm 34	69	-	24	M16X1,5	5	8	kg 0,169	NC15H020000	
		Psi 6090	inch 1,34	2,72	-	0,94		0,20	0,31	0,31 0,37		
QC VGA 8S FEMALE		MPa 42	mm -	62,5	M28X2	24	M16X1,5	5	8	kg 0,172	NC16H020000	
		Psi 6090	inch -	2,46		0,94		0,20	0,31	lb 0,38		
QC VGA 10S MALE		MPa 42	mm 34	69	-	24	M18X1,5	7	10	kg 0,169	NC15H020001	
		Psi 6090	inch 1,34	2,72	-	0,94		0,28	0,39	0,39 0,37		
QC VGA 10S FEMALE		MPa 42	mm -	62,5	M28X2	24	M18X1,5	7	10	kg 0,158	NC16H020001	
		Psi 6090	inch -	2,46		0,94		0,28	0,39	lb 0,35		
QC VGA 12S MALE		12,5	MPa 42	mm 43	70	-	27	M20X1,5	8	12	kg 0,251	NC15H030000
			Psi 6090	inch 1,69	2,76	-	1,06		0,31	0,47	0,47 0,55	
QC VGA 12S FEMALE	MPa 42		mm -	59,5	M36X2	27	M20X1,5	8	12	kg 0,254	NC16H030000	
	Psi 6090		inch -	2,34		1,06		0,31	0,47	lb 0,56		
QC VGA 14S MALE	MPa 42		mm 43	72	-	27	M22X1,5	8	14	kg 0,26	NC15H030001	
	Psi 6090		inch 1,69	2,83	-	1,06		0,31	0,55	0,55 0,57		
QC VGA 14S FEMALE	MPa 42		mm -	61,5	M36X2	27	M22X1,5	8	14	kg 0,258	NC16H030001	
	Psi 6090		inch -	2,42		1,06		0,31	0,55	lb 0,57		
QC VGA 16S MALE	MPa 42		mm 43	72	-	27	M24X1,5	12	16	kg 0,281	NC15H030002	
	Psi 6090		inch 1,69	2,83	-	1,06		0,47	0,63	0,63 0,62		
QC VGA 16S FEMALE	MPa 42	mm -	61,5	M36X2	27	M24X1,5	12	16	kg 0,278	NC16H030002		
	Psi 6090	inch -	2,42		1,06		0,47	0,63	lb 0,61			
QC VGA 16S MALE	20	MPa 42	mm 48	79	-	34	M24X1,5	12	16	kg 0,374	NC15H040000	
		Psi 6090	inch 1,89	3,11	-	1,34		0,47	0,63	0,63 0,82		
QC VGA 16S FEMALE		MPa 42	mm -	78	M42X2	34	M24X1,5	12	16	kg 0,266	NC16H040000	
		Psi 6090	inch -	3,07		1,34		0,47	0,63	lb 0,59		
QC VGA 20S MALE		MPa 42	mm 48	81	-	34	M30X2	16	20	kg 0,383	NC15H040001	
		Psi 6090	inch 1,89	3,19	-	1,34		0,63	0,79	0,79 0,84		
QC VGA 20S FEMALE		MPa 42	mm -	80	M42X2	34	M30X2	16	20	kg 0,436	NC16H040001	
		Psi 6090	inch -	3,15		1,34		0,63	0,79	lb 0,96		
QC VGA 20S MALE		25	MPa 35	mm 57	100,5	-	41	M30X2	16	20	kg 0,723	NC15H050000
			Psi 5075	inch 2,24	3,96	-	1,61		0,63	0,79	0,79 1,59	
QC VGA 20S FEMALE	MPa 35		mm -	97	M48x2	41	M30X2	16	20	kg 0,721	NC16H050000	
	Psi 5075		inch -	3,82		1,61		0,63	0,79	lb 1,59		
QC VGA 25S MALE	MPa 35		mm 57	102,5	-	41	M36X2	20	25	kg 0,742	NC15H050001	
	Psi 5075		inch 2,24	4,04	-	1,61		0,79	0,98	0,98 1,64		
QC VGA 25S FEMALE	MPa 35		mm -	99	M48x2	41	M36X2	20	25	kg 0,74	NC16H050001	
	Psi 5075		inch -	3,90		1,61		0,79	0,98	lb 1,63		
QC VGA 30S MALE	MPa 35		mm 57	104,5	-	46	M42X2	25	30	kg 0,821	NC15H050002	
	Psi 5075		inch 2,24	4,11	-	1,81		0,98	1,18	1,18 1,81		
QC VGA 30S FEMALE	MPa 35	mm -	101	M48x2	46	M42X2	25	30	kg 0,813	NC16H050002		
	Psi 5075	inch -	3,98		1,81		0,98	1,18	lb 1,79			



## SCREW-TO-CONNECT-COUPLINGS ISO 14541 (male / female) MALE THREAD METRIC ISO 8434-1-S (DIN 2353)

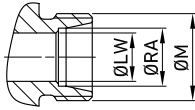
**SS**  
Stainless Steel

TYPE	DN	PN	ØA	C	z	ch	ØM	ØLW	ØRA	WEIGHT	ITEM CODE
QC VGA 8S MALE	10	MPa 42	mm 34	69	-	24	M16X1,5	5	8	kg 0,169	NC15H02S000
		Psi 6090	inch 1,34	2,72		0,94		0,20	0,31	0,31 0,37	
QC VGA 8S FEMALE		MPa 42	mm -	62,5		24	M16X1,5	5	8	kg 0,172	NC16H02S000
		Psi 6090	inch -	2,46	M28X2	0,94		0,20	0,31	lb 0,38	
QC VGA 10S MALE		MPa 42	mm 34	69	-	24	M18X1,5	7	10	kg 0,169	NC15H02S001
		Psi 6090	inch 1,34	2,72		0,94		0,28	0,39	0,39 0,37	
QC VGA 10S FEMALE		MPa 42	mm -	62,5		24	M18X1,5	7	10	kg 0,158	NC16H02S001
		Psi 6090	inch -	2,46	M28X2	0,94		0,28	0,39	lb 0,35	
QC VGA 12S MALE		MPa 42	mm 43	70	-	27	M20X1,5	8	12	kg 0,251	NC15H03S000
		Psi 6090	inch 1,69	2,76		1,06		0,31	0,47	0,47 0,55	
QC VGA 12S FEMALE		MPa 42	mm -	59,5		27	M20X1,5	8	12	kg 0,254	NC16H03S000
		Psi 6090	inch -	2,34	M36X2	1,06		0,31	0,47	lb 0,56	
QC VGA 14S MALE	MPa 42	mm 43	72	-	27	M22X1,5	8	14	kg 0,26	NC15H03S001	
	Psi 6090	inch 1,69	2,83		1,06		0,31	0,55	0,55 0,57		
QC VGA 14S FEMALE	MPa 42	mm -	61,5		27	M22X1,5	8	14	kg 0,258	NC16H03S001	
	Psi 6090	inch -	2,42	M36X2	1,06		0,31	0,55	lb 0,57		
QC VGA 16S MALE	MPa 42	mm 43	72	-	27	M24X1,5	12	16	kg 0,281	NC15H03S002	
	Psi 6090	inch 1,69	2,83		1,06		0,47	0,63	0,63 0,62		
QC VGA 16S FEMALE	MPa 42	mm -	61,5		27	M24X1,5	12	16	kg 0,278	NC16H03S002	
	Psi 6090	inch -	2,42	M36X2	1,06		0,47	0,63	lb 0,61		
QC VGA 16S MALE	MPa 42	mm 48	79	-	34	M24X1,5	12	16	kg 0,374	NC15H04S000	
	Psi 6090	inch 1,89	3,11		1,34		0,47	0,63	0,63 0,82		
QC VGA 16S FEMALE	MPa 42	mm -	78		34	M24X1,5	12	16	kg 0,266	NC16H04S000	
	Psi 6090	inch -	3,07	M42X2	1,34		0,47	0,63	lb 0,59		
QC VGA 20S MALE	MPa 42	mm 48	81	-	34	M30X2	16	20	kg 0,383	NC15H04S001	
	Psi 6090	inch 1,89	3,19		1,34		0,63	0,79	0,79 0,84		
QC VGA 20S FEMALE	MPa 42	mm -	80		34	M30X2	16	20	kg 0,436	NC16H04S001	
	Psi 6090	inch -	3,15	M42X2	1,34		0,63	0,79	lb 0,96		
QC VGA 20S MALE	MPa 35	mm 57	100,5	-	41	M30X2	16	20	kg 0,723	NC15H05S000	
	Psi 5075	inch 2,24	3,96		1,61		0,63	0,79	0,79 1,59		
QC VGA 20S FEMALE	MPa 35	mm -	97		41	M30X2	16	20	kg 0,721	NC16H05S000	
	Psi 5075	inch -	3,82	M48x2	1,61		0,63	0,79	lb 1,59		
QC VGA 25S MALE	MPa 35	mm 57	102,5	-	41	M36X2	20	25	kg 0,742	NC15H05S001	
	Psi 5075	inch 2,24	4,04		1,61		0,79	0,98	0,98 1,64		
QC VGA 25S FEMALE	MPa 35	mm -	99		41	M36X2	20	25	kg 0,74	NC16H05S001	
	Psi 5075	inch -	3,90	M48x2	1,61		0,79	0,98	lb 1,63		
QC VGA 30S MALE	MPa 35	mm 57	104,5	-	46	M42X2	25	30	kg 0,821	NC15H05S002	
	Psi 5075	inch 2,24	4,11		1,81		0,98	1,18	1,18 1,81		
QC VGA 30S FEMALE	MPa 35	mm -	101		46	M42X2	25	30	kg 0,813	NC16H05S002	
	Psi 5075	inch -	3,98	M48x2	1,81		0,98	1,18	lb 1,79		


**SCREW-TO-CONNECT-COUPPLINGS ISO 14541 (male / female)  
MALE THREAD METRIC ISO 8434-1-L (DIN 2353)**
**CS**

Carbon Steel

TYPE	DN	PN	ØA	C	z	ch	ØM	ØLW	ØRA	WEIGHT	ITEM CODE
QC VGA 8L MALE	6.3	MPa 42	mm 30	61	-	19	M14X1,5	6	8	kg 0,114	NC15L010000
		Psi 6090	inch 1,18	2,40	-	0,75		0,24	0,31	0,31 0,25	
QC VGA 8L FEMALE	6.3	MPa 42	mm -	57,5	M24X2	19	M14X1,5	6	8	kg 0,1	NC16L010000
		Psi 6090	inch -	2,26	-	0,75		0,24	0,31	lb 0,22	
QC VGA 6L MALE	6.3	MPa 42	mm 34	67	-	24	M12X1,5	4	6	kg 0,19	NC15L020000
		Psi 6090	inch 1,34	2,64	-	0,94		0,16	0,24	0,24 0,42	
QC VGA 6L FEMALE	6.3	MPa 42	mm -	60,5	M28X2	24	M12X1,5	4	6	kg 0,166	NC16L020000
		Psi 6090	inch -	2,38	-	0,94		0,16	0,24	lb 0,37	
QC VGA 8L MALE	10	MPa 42	mm 34	67	-	24	M14X1,5	6	8	kg 0,165	NC15L020001
		Psi 6090	inch 1,34	2,64	-	0,94		0,24	0,31	0,31 0,36	
QC VGA 8L FEMALE	10	MPa 42	mm -	60,5	M28X2	24	M14X1,5	6	8	kg 0,167	NC16L020001
		Psi 6090	inch -	2,38	-	0,94		0,24	0,31	lb 0,37	
QC VGA 10L MALE	10	MPa 42	mm 34	68	-	24	M16X1,5	8	10	kg 0,166	NC15L020002
		Psi 6090	inch 1,34	2,68	-	0,94		0,31	0,39	0,39 0,37	
QC VGA 10L FEMALE	10	MPa 42	mm -	61,5	M28X2	24	M16X1,5	8	10	kg 0,173	NC16L020002
		Psi 6090	inch -	2,42	-	0,94		0,31	0,39	lb 0,38	
QC VGA 10L MALE	12,5	MPa 42	mm 43	69	-	27	M16X1,5	8	10	kg 0,247	NC15L030000
		Psi 6090	inch 1,69	2,72	-	1,06		0,31	0,39	0,39 0,54	
QC VGA 10L FEMALE	12,5	MPa 42	mm -	58,5	M36X2	27	M16X1,5	8	10	kg 0,27	NC16L030000
		Psi 6090	inch -	2,30	-	1,06		0,31	0,39	lb 0,60	
QC VGA 12L MALE	12,5	MPa 42	mm 43	69	-	27	M18X1,5	10	12	kg 0,247	NC15L030001
		Psi 6090	inch 1,69	2,72	-	1,06		0,39	0,47	0,47 0,54	
QC VGA 12L FEMALE	12,5	MPa 42	mm -	58,5	M36X2	27	M18X1,5	10	12	kg 0,25	NC16L030001
		Psi 6090	inch -	2,30	-	1,06		0,39	0,47	lb 0,55	
QC VGA 15L MALE	12,5	MPa 42	mm 43	70	-	27	M22X1,5	12	15	kg 0,253	NC15L030002
		Psi 6090	inch 1,69	2,76	-	1,06		0,47	0,59	0,59 0,56	
QC VGA 15L FEMALE	12,5	MPa 42	mm -	59,5	M36X2	27	M22X1,5	12	15	kg 0,251	NC16L030002
		Psi 6090	inch -	2,34	-	1,06		0,47	0,59	lb 0,55	
QC VGA 18L MALE	12,5	MPa 42	mm 43	70	-	27	M26X1,5	15	18	kg 0,258	NC15L030003
		Psi 6090	inch 1,69	2,76	-	1,06		0,59	0,71	0,71 0,57	
QC VGA 18L FEMALE	12,5	MPa 42	mm -	59,5	M36X2	27	M26X1,5	15	18	kg 0,261	NC16L030003
		Psi 6090	inch -	2,34	-	1,06		0,59	0,71	lb 0,58	

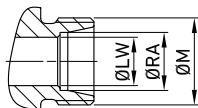


## SCREW-TO-CONNECT-COUPLINGS ISO 14541 (male / female) MALE THREAD METRIC ISO 8434-1-L (DIN 2353)

**CS**  
Carbon Steel

TYPE	DN	PN	ØA	C	z	ch	ØM	ØLW	ØRA	WEIGHT	ITEM CODE
QC VGA 18L MALE	20	MPa 42	mm 48	77	-	34	M26X1,5	15	18	kg 0,372	NC15L040000
		Psi 6090	inch 1,89	3,03		1,34		0,59	0,71	0,71 0,82	
QC VGA 18L FEMALE		MPa 42	mm -	76	M42X2	34	M26X1,5	15	18	kg 0,424	NC16L040000
		Psi 6090	inch -	2,99		1,34		0,59	0,71	lb 0,93	
QC VGA 22L MALE		MPa 42	mm 48	79	-	34	M30X2	19	22	kg 0,375	NC15L040001
		Psi 6090	inch 1,89	3,11		1,34		0,75	0,87	0,87 0,83	
QC VGA 22L FEMALE		MPa 42	mm -	78	M42X2	34	M30X2	19	22	kg 0,854	NC16L040001
		Psi 6090	inch -	3,07		1,34		0,75	0,87	lb 1,88	
QC VGA 22L MALE		MPa 35	mm 57	98,5	-	41	M30X2	19	22	kg 0,708	NC15L050000
		Psi 5075	inch 2,24	3,88		1,61		0,75	0,87	0,87 1,56	
QC VGA 22L FEMALE	MPa 35	mm -	95	M48X2	41	M30X2	19	22	kg 0,701	NC16L050000	
	Psi 5075	inch -	3,74		1,61		0,75	0,87	lb 1,55		
QC VGA 28L MALE	MPa 35	mm 57	98,5	-	41	M36X2	24	28	kg 0,707	NC15L050001	
	Psi 5075	inch 2,24	3,88		1,61		0,94	1,10	1,10 1,56		
QC VGA 28L FEMALE	MPa 35	mm -	95	M48X2	41	M36X2	24	28	kg 0,7	NC16L050001	
	Psi 5075	inch -	3,74		1,61		0,94	1,10	lb 1,54		
QC VGA 35L MALE	MPa 35	mm 57	100	-	46	M45X2	30	35	kg 0,784	NC15L050002	
	Psi 5075	inch 2,24	3,94		1,81		1,18	1,38	1,38 1,73		
QC VGA 35L FEMALE	MPa 35	mm -	97	M48X2	46	M45X2	30	35	kg 0,777	NC16L050002	
	Psi 5075	inch -	3,82		1,81		1,18	1,38	lb 1,71		



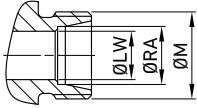


## SCREW-TO-CONNECT-COUPLINGS ISO 14541 (male / female) MALE THREAD METRIC ISO 8434-1-L (DIN 2353)

**SS**

Stainless Steel

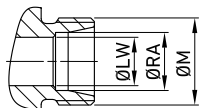
TYPE	DN	PN	ØA	C	z	ch	ØM	ØLW	ØRA	WEIGHT	ITEM CODE
QC VGA 8L MALE	6.3	MPa 42	mm 30	61	-	19	M14X1,5	6	8	kg 0,114	NC15L01S000
		Psi 6090	inch 1,18	2,40	-	0,75		0,24	0,31	0,31 0,25	
QC VGA 8L FEMALE	6.3	MPa 42	mm -	50,5	M24X2	19	M14X1,5	6	8	kg 0,1	NC16L01S000
		Psi 6090	inch -	1,99	-	0,75		0,24	0,31	lb 0,22	
QC VGA 6L MALE	10	MPa 42	mm 34	67	-	24	M12X1,5	4	6	kg 0,19	NC15L02S000
		Psi 6090	inch 1,34	2,64	-	0,94		0,16	0,24	0,24 0,42	
QC VGA 6L FEMALE	10	MPa 42	mm -	60,5	M28X2	24	M12X1,5	4	6	kg 0,166	NC16L02S000
		Psi 6090	inch -	2,38	-	0,94		0,16	0,24	lb 0,37	
QC VGA 8L MALE	10	MPa 42	mm 34	67	-	24	M14X1,5	6	8	kg 0,165	NC15L02S001
		Psi 6090	inch 1,34	2,64	-	0,94		0,24	0,31	0,31 0,36	
QC VGA 8L FEMALE	10	MPa 42	mm -	60,5	M28X2	24	M14X1,5	6	8	kg 0,167	NC16L02S001
		Psi 6090	inch -	2,38	-	0,94		0,24	0,31	lb 0,37	
QC VGA 10L MALE	12,5	MPa 42	mm 34	68	-	24	M16X1,5	8	10	kg 0,166	NC15L02S002
		Psi 6090	inch 1,34	2,68	-	0,94		0,31	0,39	0,39 0,37	
QC VGA 10L FEMALE	12,5	MPa 42	mm -	61,5	M28X2	24	M16X1,5	8	10	kg 0,173	NC16L0S0002
		Psi 6090	inch -	2,42	-	0,94		0,31	0,39	lb 0,38	
QC VGA 10L MALE	12,5	MPa 42	mm 43	69	-	27	M16X1,5	8	10	kg 0,247	NC15L03S000
		Psi 6090	inch 1,69	2,72	-	1,06		0,31	0,39	0,39 0,54	
QC VGA 10L FEMALE	12,5	MPa 42	mm -	58,5	M36X2	27	M16X1,5	8	10	kg 0,27	NC16L03S000
		Psi 6090	inch -	2,30	-	1,06		0,31	0,39	lb 0,60	
QC VGA 12L MALE	12,5	MPa 42	mm 43	69	-	27	M18X1,5	10	12	kg 0,247	NC15L03S001
		Psi 6090	inch 1,69	2,72	-	1,06		0,39	0,47	0,47 0,54	
QC VGA 12L FEMALE	12,5	MPa 42	mm -	58,5	M36X2	27	M18X1,5	10	12	kg 0,25	NC16L03S001
		Psi 6090	inch -	2,30	-	1,06		0,39	0,47	lb 0,55	
QC VGA 15L MALE	12,5	MPa 42	mm 43	70	-	27	M22X1,5	12	15	kg 0,253	NC15L03S002
		Psi 6090	inch 1,69	2,76	-	1,06		0,47	0,59	0,59 0,56	
QC VGA 15L FEMALE	12,5	MPa 42	mm -	59,5	M36X2	27	M22X1,5	12	15	kg 0,251	NC16L03S002
		Psi 6090	inch -	2,34	-	1,06		0,47	0,59	lb 0,55	
QC VGA 18L MALE	12,5	MPa 42	mm 43	70	-	27	M26X1,5	15	18	kg 0,258	NC15L03S003
		Psi 6090	inch 1,69	2,76	-	1,06		0,59	0,71	0,71 0,57	
QC VGA 18L FEMALE	12,5	MPa 42	mm -	59,5	M36X2	27	M26X1,5	15	18	kg 0,261	NC16L03S003
		Psi 6090	inch -	2,34	-	1,06		0,59	0,71	lb 0,58	



## SCREW-TO-CONNECT-COUPPLINGS ISO 14541 (male / female) MALE THREAD METRIC ISO 8434-1-L (DIN 2353)

**SS**  
Stainless Steel

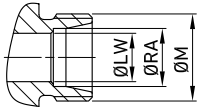
TYPE	DN	PN	ØA	C	z	ch	ØM	ØLW	ØRA	WEIGHT	ITEM CODE
QC VGA 18L MALE	20	MPa 42	mm 48	77	-	34	M26X1,5	15	18	kg 0,372	NC15L04S000
		Psi 6090	inch 1,89	3,03		1,34		0,59	0,71	0,71 0,82	
QC VGA 18L FEMALE		MPa 42	mm -	76	M42X2	34	M26X1,5	15	18	kg 0,424	NC16L04S000
		Psi 6090	inch -	2,99		1,34		0,59	0,71	lb 0,93	
QC VGA 22L MALE		MPa 42	mm 48	79	-	34	M30X2	19	22	kg 0,375	NC15L04S001
		Psi 6090	inch 1,89	3,11		1,34		0,75	0,87	0,87 0,83	
QC VGA 22L FEMALE		MPa 42	mm -	78	M42X2	34	M30X2	19	22	kg 0,854	NC16L04S001
		Psi 6090	inch -	3,07		1,34		0,75	0,87	lb 1,88	
QC VGA 22L MALE		MPa 35	mm 57	98,5	-	41	M30X2	19	22	kg 0,708	NC15L05S000
		Psi 5075	inch 2,24	3,88		1,61		0,75	0,87	0,87 1,56	
QC VGA 22L FEMALE	MPa 35	mm -	95	M48X2	41	M30X2	19	22	kg 0,701	NC16L05S000	
	Psi 5075	inch -	3,74		1,61		0,75	0,87	lb 1,55		
QC VGA 28L MALE	MPa 35	mm 57	98,5	-	41	M36X2	24	28	kg 0,707	NC15L05S001	
	Psi 5075	inch 2,24	3,88		1,61		0,94	1,10	1,10 1,56		
QC VGA 28L FEMALE	MPa 35	mm -	95	M48X2	41	M36X2	24	28	kg 0,7	NC16L05S001	
	Psi 5075	inch -	3,74		1,61		0,94	1,10	lb 1,54		
QC VGA 35L MALE	MPa 35	mm 57	100	-	46	M45X2	30	35	kg 0,784	NC15L05S002	
	Psi 5075	inch 2,24	3,94		1,81		1,18	1,38	1,38 1,73		
QC VGA 35L FEMALE	MPa 35	mm -	97	M48X2	46	M45X2	30	35	kg 0,777	NC16L05S002	
	Psi 5075	inch -	3,82		1,81		1,18	1,38	lb 1,71		



## SCREW-TO-CONNECT-COUPLINGS ISO 14541 (male / female) MALE THREAD METRIC ISO 8434-1-S (DIN 2353) BULKHEAD

Carbon Steel

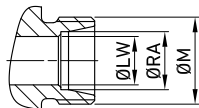
TYPE	DN	PN	ØA	C	z	ch	ØM	ØLW	ØRA	WEIGHT	ITEM CODE	
QC VGA 10S BK MALE	12,5	MPa 42	mm 43	85	-	27	M18X1,5	7	10	kg 0,453	NC15I030000	
		Psi 6090	inch 1,69	3,35		1,06		0,28	0,39	lb 1,00		
QC VGA 10S BK FEMALE		MPa 42	mm -	74,5		M36X2	27	M18X1,5	7	10	kg 0,271	NC16I030000
		Psi 6090	inch -	2,93		1,06	0,28		0,39	lb 0,60		
QC VGA 12S BK MALE		MPa 42	mm 43	85	-	27	M20X1,5	8	12	kg 0,457	NC15I030001	
		Psi 6090	inch 1,69	3,35		1,06		0,31	0,47	lb 1,01		
QC VGA 12S BK FEMALE		MPa 42	mm -	74,5		M36X2	27	M20X1,5	8	12	kg 0,275	NC16I030001
		Psi 6090	inch -	2,93		1,06	0,31		0,47	lb 0,61		
QC VGA 16S BK MALE		MPa 42	mm 43	87	-	27	M24X1,5	12	16	kg 0,471	NC15I030002	
		Psi 6090	inch 1,69	3,43		1,06		0,47	0,63	lb 1,04		
QC VGA 16S BK FEMALE		MPa 42	mm -	76,5		M36X2	27	M24X1,5	12	16	kg 0,283	NC16I030002
		Psi 6090	inch -	3,01		1,06	0,47		0,63	lb 0,62		
QC VGA 16S BK MALE	MPa 42	mm 48	94	-	34	M24X1,5	12	16	kg 0,674	NC15I040000		
	Psi 6090	inch 1,89	3,70		1,34		0,47	0,63	lb 1,49			
QC VGA 16S BK FEMALE	MPa 42	mm -	93		M42X2	34	M24X1,5	12	16	kg 0,447	NC16I040000	
	Psi 6090	inch -	3,66		1,34	0,47		0,63	lb 0,99			
QC VGA 20S BK MALE	MPa 42	mm 48	103	-	34	M30X2	16	20	kg 0,716	NC15I040001		
	Psi 6090	inch 1,89	4,06		1,34		0,63	0,79	lb 1,58			
QC VGA 20S BK FEMALE	MPa 42	mm -	102		M42X2	34	M30X2	16	20	kg 0,484	NC16I040001	
	Psi 6090	inch -	4,02		1,34	0,63		0,79	lb 1,07			
QC VGA 20S BK MALE	MPa 35	mm 57	122,5	-	41	M30X2	16	20	kg 1,217	NC15I050000		
	Psi 5075	inch 2,24	4,82		1,61		0,63	0,79	lb 2,68			
QC VGA 20S BK FEMALE	MPa 35	mm -	119		M48X2	41	M30X2	16	20	kg 0,749	NC16I050000	
	Psi 5075	inch -	4,69		1,61	0,63		0,79	lb 1,65			
QC VGA 25S BK MALE	MPa 35	mm 57	122,5	-	41	M36X2	20	25	kg 1,398	NC15I050001		
	Psi 5075	inch 2,24	4,82		1,61		0,79	0,98	lb 3,08			
QC VGA 25S BK FEMALE	MPa 35	mm -	119		M48X2	41	M36X2	20	25	kg 0,84	NC16I050001	
	Psi 5075	inch -	4,69		1,61	0,79		0,98	lb 1,85			
QC VGA 30S BK MALE	MPa 35	mm 57	124,5	-	46	M42X2	25	30	kg 1,566	NC15I050002		
	Psi 5075	inch 2,24	4,90		1,81		0,98	1,18	lb 3,45			
QC VGA 30S BK FEMALE	MPa 35	mm -	121		M48X2	46	M42X2	25	30	kg 0,948	NC16I050002	
	Psi 5075	inch -	4,76		1,81	0,98		1,18	lb 2,09			



## SCREW-TO-CONNECT-COUPPLINGS ISO 14541 (male / female) MALE THREAD METRIC ISO 8434-1-S (DIN 2353) BULKHEAD

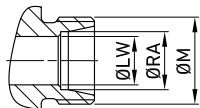
TYPE	DN	PN	ØA	C	z	ch	ØM	ØLW	ØRA	WEIGHT	ITEM CODE
QC VGA 10S BK MALE	12,5	MPa 42	mm 43	85	-	27	M18X1,5	7	10	kg 0,453	NC15103S000
		Psi 6090	inch 1,69	3,35		1,06		0,28	0,39	lb 1,00	
QC VGA 10S BK FEMALE		MPa 42	mm -	74,5	M36X2	27	M18X1,5	7	10	kg 0,271	NC16103S000
		Psi 6090	inch -	2,93		1,06		0,28	0,39	lb 0,60	
QC VGA 12S BK MALE		MPa 42	mm 43	85	-	27	M20X1,5	8	12	kg 0,457	NC15103S001
		Psi 6090	inch 1,69	3,35		1,06		0,31	0,47	lb 1,01	
QC VGA 12S BK FEMALE		MPa 42	mm -	74,5	M36X2	27	M20X1,5	8	12	kg 0,275	NC16103S001
		Psi 6090	inch -	2,93		1,06		0,31	0,47	lb 0,61	
QC VGA 16S BK MALE		MPa 42	mm 43	87	-	27	M24X1,5	12	16	kg 0,471	NC15103S002
		Psi 6090	inch 1,69	3,43		1,06		0,47	0,63	lb 1,04	
QC VGA 16S BK FEMALE		MPa 42	mm -	76,5	M36X2	27	M24X1,5	12	16	kg 0,283	NC16103S002
		Psi 6090	inch -	3,01		1,06		0,47	0,63	lb 0,62	
QC VGA 16S BK MALE	MPa 42	mm 48	94	-	34	M24X1,5	12	16	kg 0,674	NC15104S000	
	Psi 6090	inch 1,89	3,70		1,34		0,47	0,63	lb 1,49		
QC VGA 16S BK FEMALE	MPa 42	mm -	93	M42X2	34	M24X1,5	12	16	kg 0,447	NC16104S000	
	Psi 6090	inch -	3,66		1,34		0,47	0,63	lb 0,99		
QC VGA 20S BK MALE	MPa 42	mm 48	103	-	34	M30X2	16	20	kg 0,716	NC15104S001	
	Psi 6090	inch 1,89	4,06		1,34		0,63	0,79	lb 1,58		
QC VGA 20S BK FEMALE	MPa 42	mm -	102	M42X2	34	M30X2	16	20	kg 0,484	NC16104S001	
	Psi 6090	inch -	4,02		1,34		0,63	0,79	lb 1,07		
QC VGA 20S BK MALE	MPa 35	mm 57	122,5	-	41	M30X2	16	20	kg 1,217	NC15105S000	
	Psi 5075	inch 2,24	4,82		1,61		0,63	0,79	lb 2,68		
QC VGA 20S BK FEMALE	MPa 35	mm -	119	M48X2	41	M30X2	16	20	kg 0,749	NC16105S000	
	Psi 5075	inch -	4,69		1,61		0,63	0,79	lb 1,65		
QC VGA 25S BK MALE	MPa 35	mm 57	122,5	-	41	M36X2	20	25	kg 1,398	NC15105S001	
	Psi 5075	inch 2,24	4,82		1,61		0,79	0,98	lb 3,08		
QC VGA 25S BK FEMALE	MPa 35	mm -	119	M48X2	41	M36X2	20	25	kg 0,84	NC16105S001	
	Psi 5075	inch -	4,69		1,61		0,79	0,98	lb 1,85		
QC VGA 30S BK MALE	MPa 35	mm 57	124,5	-	46	M42X2	25	30	kg 1,566	NC15105S002	
	Psi 5075	inch 2,24	4,90		1,81		0,98	1,18	lb 3,45		
QC VGA 30S BK FEMALE	MPa 35	mm -	121	M48X2	46	M42X2	25	30	kg 0,948	NC16105S002	
	Psi 5075	inch -	4,76		1,81		0,98	1,18	lb 2,09		




**SCREW-TO-CONNECT-COUPLINGS ISO 14541 (male / female)  
MALE THREAD METRIC ISO 8434-1-L (DIN 2353) BULKHEAD**
**CS**

Carbon Steel

TYPE	DN	PN	ØA	C	z	ch	ØM	ØLW	ØRA	WEIGHT	ITEM CODE
QC VGA 8L BK MALE	10	MPa 42	mm 34	82		24	M14X1,5	6	8	kg 0,173	NC15M020000
		Psi 6090	inch 1,34	3,23		0,94		0,24	0,31	0,31 0,38	
QC VGA 8L BK FEMALE		MPa 42	mm -	75,5	M28X2	24	M14X1,5	6	8	kg 0,161	NC16M020000
		Psi 6090	inch -	2,97		0,94		0,24	0,31	lb 0,35	
QC VGA 10L BK MALE		MPa 42	mm 34	83		24	M16X1,5	8	10	kg 0,175	NC15M020001
		Psi 6090	inch 1,34	3,27		0,94		0,31	0,39	0,39 0,39	
QC VGA 10L BK FEMALE		MPa 42	mm -	76,5	M28X2	24	M16X1,5	8	10	kg 0,178	NC16M020001
		Psi 6090	inch -	3,01		0,94		0,31	0,39	lb 0,39	
QC VGA 10L BK MALE		MPa 42	mm 43	84		27	M16X1,5	8	10	kg 0,261	NC15M030000
		Psi 6090	inch 1,69	3,31		1,06		0,31	0,39	0,47 0,58	
QC VGA 10L BK FEMALE	MPa 42	mm -	73,5	M36X2	27	M16X1,5	8	10	kg 0,289	NC16M030000	
	Psi 6090	inch -	2,89		1,06		0,31	0,39	lb 0,64		
QC VGA 12L BK MALE	MPa 42	mm 43	85		27	M18X1,5	10	12	kg 0,263	NC15M030001	
	Psi 6090	inch 1,69	3,35		1,06		0,39	0,47	0,55 0,58		
QC VGA 12L BK FEMALE	MPa 42	mm -	74,5	M36X2	27	M18X1,5	10	12	kg 0,266	NC16M030001	
	Psi 6090	inch -	2,93		1,06		0,39	0,47	lb 0,59		
QC VGA 15L BK MALE	MPa 42	mm 43	85		27	M22X1,5	12	15	kg 0,271	NC15M030002	
	Psi 6090	inch 1,69	3,35		1,06		0,47	0,59	0,55 0,60		
QC VGA 15L BK FEMALE	MPa 42	mm -	74,5	M36X2	27	M22X1,5	12	15	kg 0,274	NC16M030002	
	Psi 6090	inch -	2,93		1,06		0,47	0,59	0,55 0,60		
QC VGA 18L BK MALE	MPa 42	mm 43	85		27	M26X1,5	15	18	kg 0,279	NC15M030003	
	Psi 6090	inch 1,69	3,35		1,06		0,59	0,71	0,63 0,62		
QC VGA 18L BK FEMALE	MPa 42	mm -	74,5	M36X2	27	M26X1,5	15	18	kg 0,282	NC16M030003	
	Psi 6090	inch -	2,93		1,06		0,59	0,71	lb 0,62		
QC VGA 15L BK MALE	MPa 42	mm 48	92		34	M22X1,5	12	15	kg 0,385	NC15M040000	
	Psi 6090	inch 1,89	3,62		1,34		0,47	0,59	0,63 0,85		
QC VGA 15L BK FEMALE	MPa 42	mm -	91	M42X2	34	M22X1,5	12	15	kg 0,438	NC16M040000	
	Psi 6090	inch -	3,58		1,34		0,47	0,59	lb 0,97		
QC VGA 18L BK MALE	MPa 42	mm 48	92		34	M26X1,5	15	18	kg 0,398	NC15M040001	
	Psi 6090	inch 1,89	3,62		1,34		0,59	0,71	0,79 0,88		
QC VGA 18L BK FEMALE	MPa 42	mm -	91	M42X2	34	M26X1,5	15	18	kg 0,446	NC16M040001	
	Psi 6090	inch -	3,58		1,34		0,59	0,71	lb 0,98		
QC VGA 22L BK MALE	MPa 42	mm 48	99		34	M30X2	19	22	kg 0,413	NC15M040002	
	Psi 6090	inch 1,89	3,90		1,34		0,75	0,87	0,79 0,91		
QC VGA 22L BK FEMALE	MPa 42	mm -	98	M42X2	34	M30X2	19	22	kg 0,466	NC16M040002	
	Psi 6090	inch -	3,86		1,34		0,75	0,87	lb 1,03		
QC VGA 22L BK MALE	MPa 35	mm 57	118,5		41	M30X2	19	22	kg 0,767	NC15M050000	
	Psi 5075	inch 2,24	4,67		1,61		0,75	0,87	0,98 1,69		
QC VGA 22L BK FEMALE	MPa 35	mm -	115	M48x2	41	M30X2	19	22	kg 0,764	NC16M050000	
	Psi 5075	inch -	4,53		1,61		0,75	0,87	lb 1,68		
QC VGA 28L BK MALE	MPa 35	mm 57	118,5		41	M36X2	24	28	kg 0,786	NC15M050001	
	Psi 5075	inch 2,24	4,67		1,61		0,94	1,10	1,18 1,73		
QC VGA 28L BK FEMALE	MPa 35	mm -	115	M48x2	41	M36X2	24	28	kg 0,784	NC16M050001	
	Psi 5075	inch -	4,53		1,61		0,94	1,10	lb 1,73		



## SCREW-TO-CONNECT-COUPPLINGS ISO 14541 (male / female) MALE THREAD METRIC ISO 8434-1-L (DIN 2353) BULKHEAD

**SS**  
Stainless Steel

TYPE	DN	PN	ØA	C	z	ch	ØM	ØLW	ØRA	WEIGHT	ITEM CODE
QC VGA 8L BK MALE	10	MPa 42	mm 34	82		24	M14X1,5	6	8	kg 0,173	NC15M02S000
		Psi 6090	inch 1,34	3,23		0,00		0,94	0,24	0,31 0,38	
QC VGA 8L BK FEMALE		MPa 42	mm -	75,5	M28X2	24	M14X1,5	6	8	kg 0,161	NC16M02S000
		Psi 6090	inch -	2,97		0,94		0,24	0,31	lb 0,35	
QC VGA 10L BK MALE		MPa 42	mm 34	83		24	M16X1,5	8	10	kg 0,175	NC15M02S001
		Psi 6090	inch 1,34	3,27		0,00		0,94	0,31	0,39 0,39	
QC VGA 10L BK FEMALE		MPa 42	mm -	76,5	M28X2	24	M16X1,5	8	10	kg 0,178	NC16M02S001
		Psi 6090	inch -	3,01		0,94		0,31	0,39	lb 0,39	
QC VGA 10L BK MALE		MPa 42	mm 43	84		27	M16X1,5	8	10	kg 0,261	NC15M03S000
		Psi 6090	inch 1,69	3,31		0,00		1,06	0,31	0,39 0,58	
QC VGA 10L BK FEMALE	MPa 42	mm -	73,5	M36X2	27	M16X1,5	8	10	kg 0,289	NC16M03S000	
	Psi 6090	inch -	2,89		1,06		0,31	0,39	lb 0,64		
QC VGA 12L BK MALE	MPa 42	mm 43	85		27	M18X1,5	10	12	kg 0,263	NC15M03S001	
	Psi 6090	inch 1,69	3,35		0,00		1,06	0,39	0,47 0,58		
QC VGA 12L BK FEMALE	MPa 42	mm -	74,5	M36X2	27	M18X1,5	10	12	kg 0,266	NC16M03S001	
	Psi 6090	inch -	2,93		1,06		0,39	0,47	lb 0,59		
QC VGA 15L BK MALE	MPa 42	mm 43	85		27	M22X1,5	12	15	kg 0,271	NC15M03S002	
	Psi 6090	inch 1,69	3,35		0,00		1,06	0,47	0,59 0,60		
QC VGA 15L BK FEMALE	MPa 42	mm -	74,5	M36X2	27	M22X1,5	12	15	kg 0,274	NC16M03S002	
	Psi 6090	inch -	2,93		1,06		0,47	0,59	0,55 0,60		
QC VGA 18L BK MALE	MPa 42	mm 43	85		27	M26X1,5	15	18	kg 0,279	NC15M03S003	
	Psi 6090	inch 1,69	3,35		0,00		1,06	0,59	0,71 0,62		
QC VGA 18L BK FEMALE	MPa 42	mm -	74,5	M36X2	27	M26X1,5	15	18	kg 0,282	NC16M03S003	
	Psi 6090	inch -	2,93		1,06		0,59	0,71	lb 0,62		
QC VGA 15L BK MALE	MPa 42	mm 48	92		34	M22X1,5	12	15	kg 0,385	NC15M04S000	
	Psi 6090	inch 1,89	3,62		0,00		1,34	0,47	0,59 0,85		
QC VGA 15L BK FEMALE	MPa 42	mm -	91	M42X2	34	M22X1,5	12	15	kg 0,438	NC16M04S000	
	Psi 6090	inch -	3,58		1,34		0,47	0,59	lb 0,97		
QC VGA 18L BK MALE	MPa 42	mm 48	92		34	M26X1,5	15	18	kg 0,398	NC15M04S001	
	Psi 6090	inch 1,89	3,62		0,00		1,34	0,59	0,71 0,88		
QC VGA 18L BK FEMALE	MPa 42	mm -	91	M42X2	34	M26X1,5	15	18	kg 0,446	NC16M04S001	
	Psi 6090	inch -	3,58		1,34		0,59	0,71	lb 0,98		
QC VGA 22L BK MALE	MPa 42	mm 48	99		34	M30X2	19	22	kg 0,413	NC15M04S002	
	Psi 6090	inch 1,89	3,90		0,00		1,34	0,75	0,87 0,91		
QC VGA 22L BK FEMALE	MPa 42	mm -	98	M42X2	34	M30X2	19	22	kg 0,466	NC16M04S002	
	Psi 6090	inch -	3,86		1,34		0,75	0,87	lb 1,03		
QC VGA 22L BK MALE	MPa 35	mm 57	118,5		41	M30X2	19	22	kg 0,767	NC15M05S000	
	Psi 5075	inch 2,24	4,67		0,00		1,61	0,75	0,87 1,69		
QC VGA 22L BK FEMALE	MPa 35	mm -	115	M48x2	41	M30X2	19	22	kg 0,764	NC16M05S000	
	Psi 5075	inch -	4,53		1,61		0,75	0,87	lb 1,68		
QC VGA 28L BK MALE	MPa 35	mm 57	118,5		41	M36X2	24	28	kg 0,786	NC15M05S001	
	Psi 5075	inch 2,24	4,67		0,00		1,61	0,94	1,10 1,73		
QC VGA 28L BK FEMALE	MPa 35	mm -	115	M48x2	41	M36X2	24	28	kg 0,784	NC16M05S001	
	Psi 5075	inch -	4,53		1,61		0,94	1,10	lb 1,73		