



ACTUATORS

Edition. 21.4

PNEUMATIC



**ULTRA COMPACT
RACK&PINION
PNEUMATIC
ACTUATORS DA**



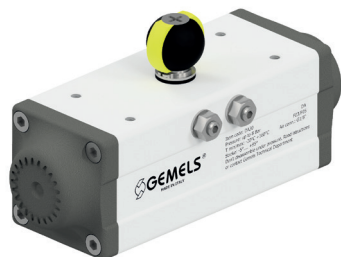
**ULTRA COMPACT
RACK&PINION
PNEUMATIC
ACTUATORS SR**



**ULTRA COMPACT
SCOTCH-YOKE
PNEUMATIC
ACTUATORS DA**



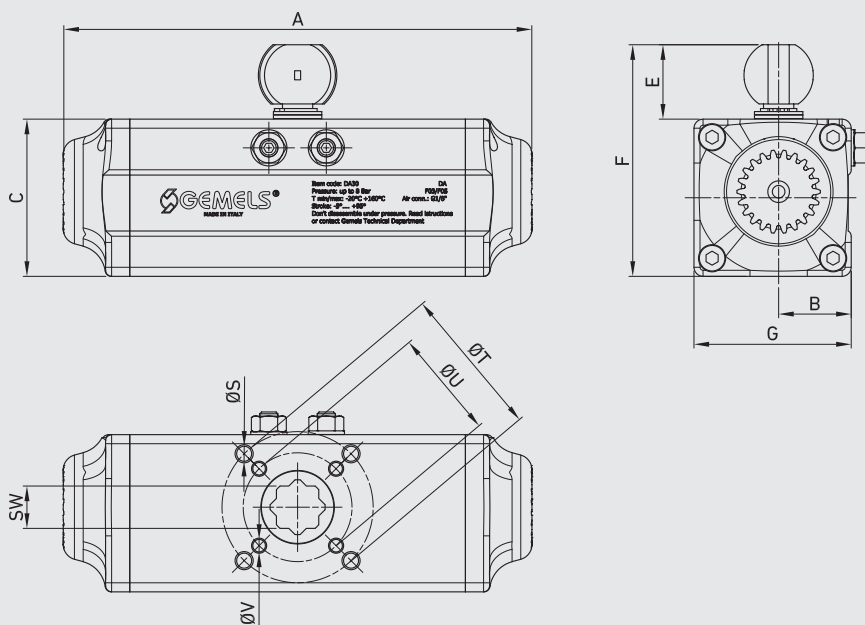
**ULTRA COMPACT
SCOTCH-YOKE
PNEUMATIC
ACTUATORS SR**



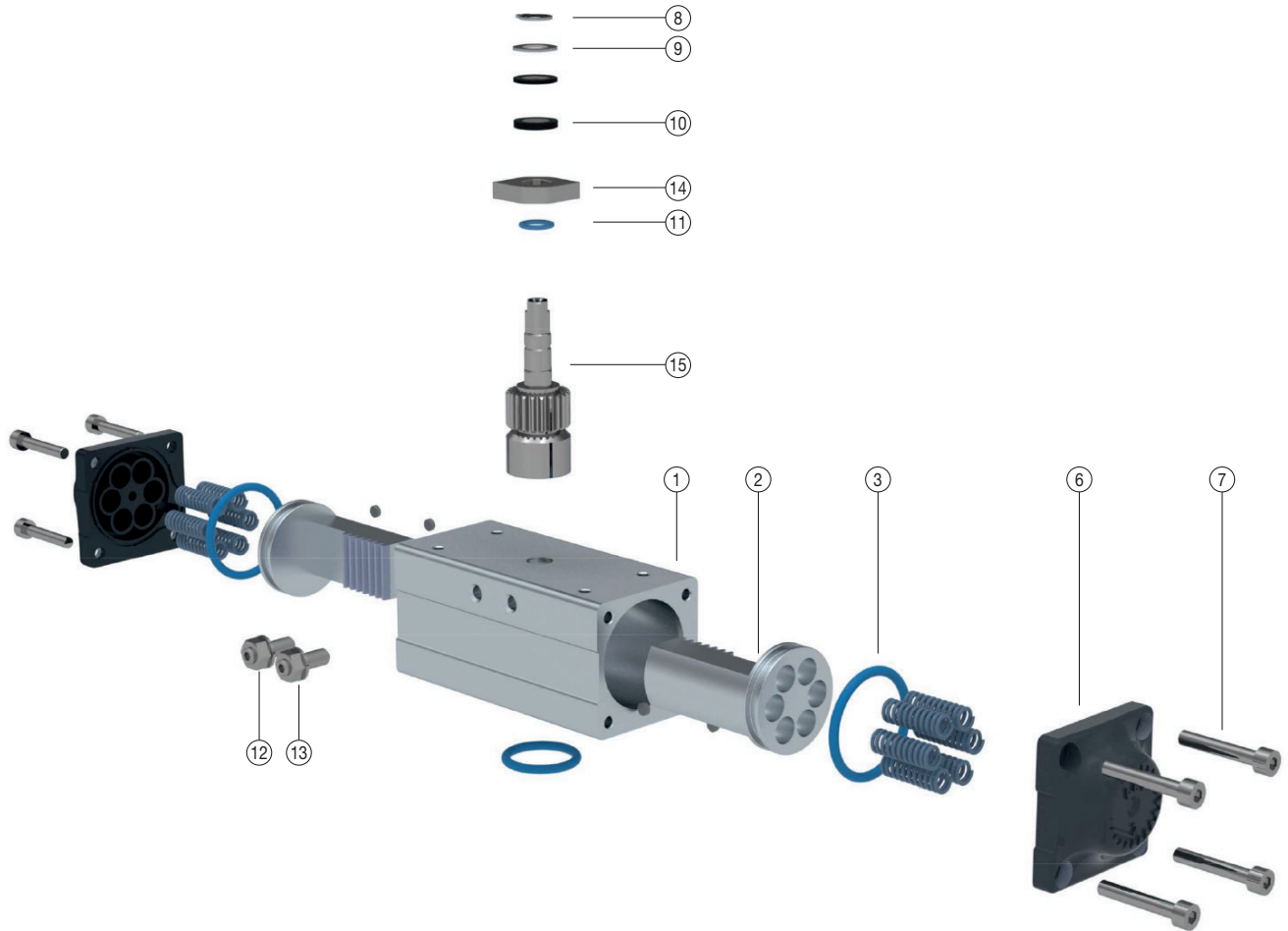
ULTRA COMPACT RACK&PINION PNEUMATIC ACTUATORS DA

- Port "A" Air to open (anti clockwise)
- Port "B" Air to close (clockwise)
- Air supply: 6 bar; maximum 8 bar
- Drive Medium = Air (Dry or lubricated); not corrosive Gas; light hydraulic oil
- Temperature= -50° to 160°C or -58 to 320° F
- Standard indicator position

- ATEX certification



ULTRA COMPACT RACK&PINION ACTUATORS



| REF NO | DESCRIPTION | QTY | MATERIAL STD UNIT | COMMENTS |
|--------|------------------------|--------|-------------------|--------------------------|
| 1 | Cylinder Body | 1 | Aluminium Anod. | |
| 2 | Driveshaft | 1 | Steel | Alt. CNI 425 |
| 3 | Piston | 2 | Aluminium | Alt. Hard Anodized/PTFE |
| 4 | Endcap | 2 | Aluminium Anod. | |
| 5 | Spring | 12 max | SiCr | S1 Double Acting only |
| 6 | Endcap Bolt | 8 | Stainless Steel | DIN921 |
| 7 | Open Stop Adj. Bolt | 2 | Stainless Steel | ISO4026 |
| 8 | Open Stop Adj. Nut | 2 | Stainless Steel | DIN934 |
| 9 | Endcap O'Ring | 2 | Buna Nitrile | Alt. Viton/Silicone/EPDM |
| 10 | Piston Back-up Bearing | 2 | PTFE+CG | |
| 11 | Piston O'Ring | 2 | Buna Nitrile | Alt. Viton/Silicone/EPDM |
| 12 | Piston Guidebar | 1 | Steel | |
| 13 | Shim ring | 1 | Stainless Steel | DIN988 |
| 14 | Driveshaft Circlip | 1 | Steel | DIN471 |
| 15 | Driveshaft O'Ring | 2 | Buna Nitrile | Alt. Viton/Silicone/EPDM |
| 16 | Driveshaft Bearing | 4 | PTFE+CG | |

TORQUES (NM) ACTUATOR DOUBLE ACTING

| | | AIR SUPPLY | | | | | | |
|--------|--------|------------|--------|--------|--------|--------|--------|--------|
| MODEL | Mpa | 0,3 | 0,4 | 0,5 | 0,55 | 0,6 | 0,7 | 0,8 |
| DA 15 | PSI | 43,5 | 58 | 72,5 | 79,75 | 87 | 101,5 | 116 |
| | Nm | 7,1 | 9,5 | 11,8 | 13,3 | 14,2 | 16,6 | 19 |
| | lbf-ft | 5,24 | 7,01 | 8,70 | 9,81 | 10,47 | 12,24 | 14,01 |
| | | | | | | | | |
| DA 30 | Nm | 13,92 | 18,57 | 23,21 | 25,99 | 27,85 | 32,49 | 37,14 |
| | lbf-ft | 10,27 | 13,70 | 17,12 | 19,17 | 20,54 | 23,96 | 27,39 |
| DA 60 | Nm | 28,49 | 37,98 | 47,48 | 53,18 | 56,98 | 66,47 | 75,97 |
| | lbf-ft | 21,01 | 28,01 | 35,02 | 39,22 | 42,03 | 49,03 | 56,03 |
| DA 110 | Nm | 55,28 | 73,7 | 92,13 | 103,19 | 110,56 | 129,99 | 147,41 |
| | lbf-ft | 40,77 | 54,36 | 67,95 | 76,11 | 81,54 | 95,88 | 108,72 |
| DA 220 | Nm | 111,42 | 148,57 | 185,71 | 207,99 | 222,85 | 259,99 | 297,17 |
| | lbf-ft | 82,18 | 109,58 | 136,97 | 153,41 | 164,37 | 191,76 | 219,18 |
| DA 340 | Nm | 169,23 | 225,64 | 282,05 | 315,89 | 338,46 | 394,87 | 451,28 |
| | lbf-ft | 124,82 | 166,42 | 208,03 | 232,99 | 249,63 | 291,24 | 332,85 |

MAXIMUM OPERATING TIME PER SECOND (0.55 MPAG / 80 PSIG)

| Actuator Size | DA15 | D30 | DA60 | DA110 | DA220 | DA340 |
|---------------|------|-----|------|-------|-------|-------|
| DA open | <1 | <1 | <1 | <1 | <1 | <1 |
| DA close | <1 | <1 | <1 | <1 | <1 | <1 |
| SR open | <1 | <1 | <1 | <1 | <1 | <1 |
| SR close | <1 | <1 | <1 | <1 | <1 | <1 |

AIR CONSUMPTION PER STROKE

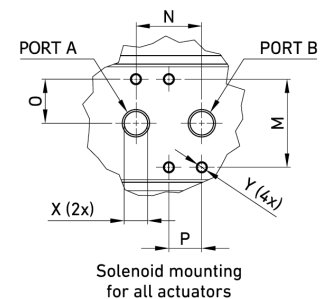
| Actuator Size | DA15 | D30 | DA60 | DA110 | DA220 | DA340 |
|--------------------------------|------|------|------|-------|-------|-------|
| Port 'A' to open (liters) | 0,03 | 0,14 | 0,08 | 0,28 | 0,28 | 0,55 |
| Port 'B' to close (liters) | 0,03 | 0,14 | 0,08 | 0,28 | 0,28 | 0,55 |
| Port 'A' to open (cubic inch) | 1,8 | 8,5 | 4,9 | 17,1 | 17,1 | 33,6 |
| Port 'B' to close (cubic inch) | 1,8 | 8,5 | 4,9 | 17,1 | 17,1 | 33,6 |

DA ACTUATORS (DOUBLE ACTING)

| TYPE | ISO5211 | A | B | C | E | F | G | M | N | O | P | ØS | T | ØV | U | X | Y | SW | WEIGHT | ITEM CODE | |
|-------|---------|------|-------|------|------|------|------|------|------|------|------|------|-----|------|------|------|-----------|------|---------|-----------|-----------------|
| DA15 | F03 | mm | 131 | 22,5 | 45 | 20 | 65 | 45 | 32 | 24 | 16 | 12 | M5 | 36 | - | - | G1/8 x 12 | M5X8 | 9 | kg 0,29 | FATAJRDA015AA0H |
| | | inch | 5,16 | 0,89 | 1,77 | 0,79 | 2,56 | 1,77 | 1,26 | 0,94 | 0,63 | 0,47 | | 1,42 | - | - | | | 0,35 | lb 0,64 | |
| DA30 | F03/F05 | mm | 155 | 26 | 52 | 20 | 72 | 52 | 32 | 24 | 16 | 12 | M6 | 50 | M5 | 36 | G1/8 x 12 | M5X8 | 14 | kg 0,78 | FATAJRDA030AA0H |
| | | inch | 6,10 | 1,02 | 2,05 | 0,79 | 2,83 | 2,05 | 1,26 | 0,94 | 0,63 | 0,47 | | 1,97 | 1,42 | 0,55 | | | lb 1,72 | | |
| DA60 | F05/F07 | mm | 198 | 32,5 | 65 | 20 | 85 | 65 | 32 | 24 | 20 | 12 | M8 | 70 | M6 | 50 | G1/8 x 12 | M5X8 | 17 | kg 1,67 | FATAJRDA060AA0H |
| | | inch | 7,80 | 1,28 | 2,56 | 0,79 | 3,35 | 2,56 | 1,26 | 0,94 | 0,79 | 0,47 | | 2,76 | 1,97 | 0,67 | | | lb 3,68 | | |
| DA110 | F05/F07 | mm | 244 | 40 | 80 | 20 | 100 | 80 | 32 | 24 | 20 | 12 | M8 | 70 | M6 | 50 | G1/4 x 12 | M5X8 | 17 | kg 2,9 | FATAJRDA110AA0H |
| | | inch | 9,61 | 1,57 | 3,15 | 0,79 | 3,94 | 3,15 | 1,26 | 0,94 | 0,79 | 0,47 | | 2,76 | 1,97 | 0,67 | | | lb 6,39 | | |
| DA220 | F07/F10 | mm | 301 | 50 | 100 | 20 | 120 | 100 | 32 | 24 | 26 | 12 | M10 | 102 | M8 | 70 | G1/4 x 12 | M5X8 | 22 | kg 3,3 | FATAJRDA220AA0H |
| | | inch | 11,85 | 1,97 | 3,94 | 0,79 | 4,72 | 3,94 | 1,26 | 0,94 | 1,02 | 0,47 | | 4,02 | 2,76 | 0,87 | | | lb 7,33 | | |
| DA340 | F07/F10 | mm | 344 | 55 | 110 | 20 | 130 | 110 | 32 | 24 | 26 | 12 | M10 | 102 | M8 | 70 | G1/4 x 12 | M5X8 | 22 | kg 4,3 | FATAJRDA340AA0H |
| | | inch | 13,54 | 2,17 | 4,33 | 0,79 | 5,12 | 4,33 | 1,26 | 0,94 | 1,02 | 0,47 | | 4,02 | 2,76 | 0,87 | | | lb 9,53 | | |

TORQUES (NM) ACTUATOR DOUBLE ACTING

| TYPE | AIR SUPPLY | | Nm | lbf-ft |
|-------|------------|-----|-----|--------|
| | MPa | 0,6 | | |
| DA15 | Psi | 87 | 14 | 10,33 |
| | MPa | 0,6 | | |
| DA30 | Psi | 87 | 28 | 20,65 |
| | MPa | 0,6 | | |
| DA60 | Psi | 87 | 57 | 42,04 |
| | MPa | 0,6 | | |
| DA110 | Psi | 87 | 110 | 81,13 |
| | MPa | 0,6 | | |
| DA220 | Psi | 87 | 223 | 164,48 |
| | MPa | 0,6 | | |
| DA340 | Psi | 87 | 339 | 250,03 |
| | MPa | 0,6 | | |

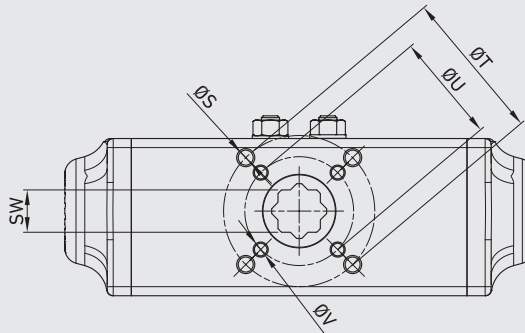
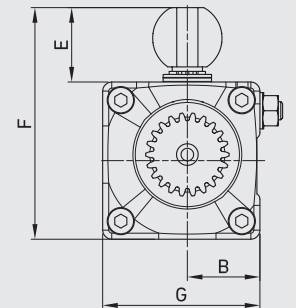
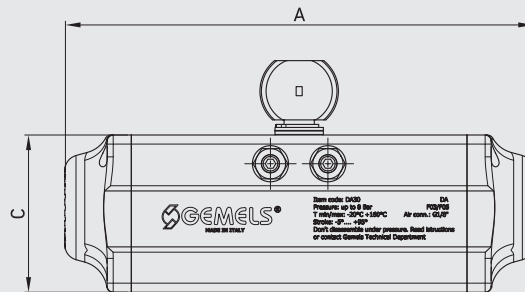




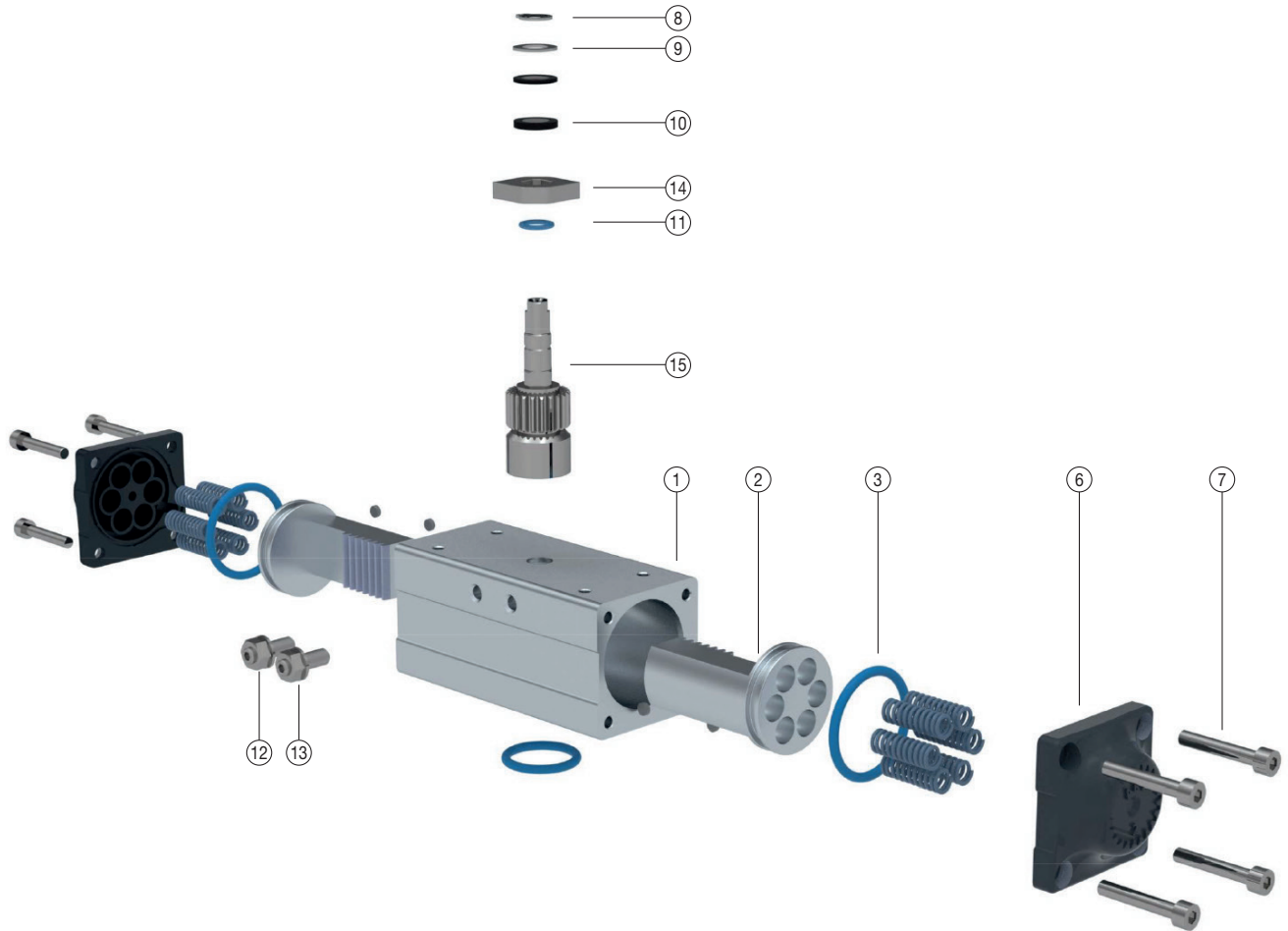
ULTRA COMPACT RACK&PINION PNEUMATIC ACTUATORS SR

- Port "A" Air to open (anti clockwise)
- Port "B" Air to close (clockwise)
- Air supply: 6 bar; maximum 8 bar
- Drive Medium = Air (Dry or lubricated); not corrosive Gas; light hydraulic oil
- Temperature= -50° to 160°C or -58 to 320° F
- Standard indicator position

- ATEX certification



ULTRA COMPACT RACK&PINION ACTUATORS



| REF NO | DESCRIPTION | QTY | MATERIAL STD UNIT | COMMENTS |
|--------|------------------------|--------|-------------------|--------------------------|
| 1 | Cylinder Body | 1 | Aluminium Anod. | |
| 2 | Driveshaft | 1 | Steel | Alt. CNI 425 |
| 3 | Piston | 2 | Aluminium | Alt. Hard Anodized/PTFE |
| 4 | Endcap | 2 | Aluminium Anod. | |
| 5 | Spring | 12 max | SiCr | S1 Double Acting only |
| 6 | Endcap Bolt | 8 | Stainless Steel | DIN921 |
| 7 | Open Stop Adj.Bolt | 2 | Stainless Steel | ISO4026 |
| 8 | Open Stop Adj. Nut | 2 | Stainless Steel | DIN934 |
| 9 | Endcap O'Ring | 2 | Buna Nitrile | Alt. Viton/Silicone/EPDM |
| 10 | Piston Back-up Bearing | 2 | PTFE+CG | |
| 11 | Piston O'Ring | 2 | Buna Nitrile | Alt. Viton/Silicone/EPDM |
| 12 | Piston Guidebar | 1 | Steel | |
| 13 | Shim ring | 1 | Stainless Steel | DIN988 |
| 14 | Driveshaft Circlip | 1 | Steel | DIN471 |
| 15 | Driveshaft O'Ring | 2 | Buna Nitrile | Alt. Viton/Silicone/EPDM |
| 16 | Driveshaft Bearing | 4 | PTFE+CG | |

TORQUES (NM) ACTUATOR SPRING RETURN

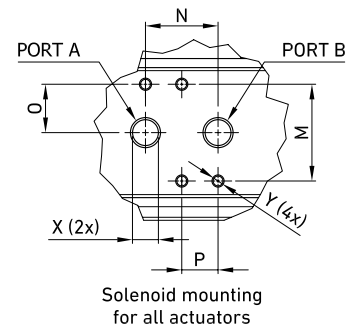
| AIR SUPPLY | | | | | | | | | | | | | | |
|--------------|---------|---------------|--------|------------|-------|-------|-------|-------|-------|-------|-------|-------|-------|-----|
| MODEL | Springs | Spring Torque | | Mpa PSI | 0,2 | | 0,3 | | 0,4 | | 0,5 | | 0,6 | |
| | | | | | 29 | End | 43,5 | End | 58 | End | 72,5 | End | 87 | End |
| | Q.ty | Start | End | | Start | End | Start | End | Start | End | Start | End | Start | End |
| SR 11/(8) | 4 | 3,60 | 2,20 | Nm | 3,60 | 2,20 | | | | | | | | |
| | | 2,66 | 1,62 | lbf•ft | 2,66 | 1,62 | | | | | | | | |
| | 6 | 5,40 | 3,40 | Nm | | | 5,40 | 3,40 | | | | | | |
| | | 3,98 | 2,51 | lbf•ft | | | 3,98 | 2,51 | | | | | | |
| | 8 | 7,20 | 4,70 | Nm | | | | | 7,20 | 4,70 | | | | |
| | | 5,31 | 3,47 | lbf•ft | | | | | 5,31 | 3,47 | | | | |
| 10 | 9,09 | 5,60 | Nm | | | | | | | 9,10 | 5,60 | | | |
| | 6,70 | 4,13 | lbf•ft | | | | | | | 6,71 | 4,13 | | | |
| 12 | 10,80 | 6,80 | Nm | | | | | | | | | 10,80 | 6,80 | |
| | 7,97 | 5,02 | lbf•ft | | | | | | | | | 7,97 | 5,02 | |
| SR 23/(13) | 4 | 7,50 | 4,40 | Nm | 7,50 | 4,40 | | | | | | | | |
| | | 5,53 | 3,25 | lbf•ft | 5,53 | 3,25 | | | | | | | | |
| | 6 | 11,30 | 6,60 | Nm | | | 11,30 | 6,60 | | | | | | |
| | | 8,33 | 4,87 | lbf•ft | | | 8,33 | 4,87 | | | | | | |
| | 8 | 15,00 | 8,80 | Nm | | | | | 15,00 | 8,80 | | | | |
| | | 11,06 | 6,49 | lbf•ft | | | | | 11,06 | 6,49 | | | | |
| 10 | 18,80 | 11,00 | Nm | | | | | | | 18,80 | 11,00 | | | |
| | 13,87 | 8,11 | lbf•ft | | | | | | | 13,87 | 8,11 | | | |
| 12 | 22,50 | 13,20 | Nm | | | | | | | | | 22,50 | 13,20 | |
| | 16,60 | 9,74 | lbf•ft | | | | | | | | | 16,60 | 9,74 | |
| SR 45/(26) | 4 | 15,30 | 8,50 | Nm | 15,30 | 8,50 | | | | | | | | |
| | | 11,28 | 6,27 | lbf•ft | 11,28 | 6,27 | | | | | | | | |
| | 6 | 22,90 | 12,70 | Nm | | | 22,90 | 12,70 | | | | | | |
| | | 16,89 | 9,37 | lbf•ft | | | 16,89 | 9,37 | | | | | | |
| | 8 | 30,50 | 17,00 | Nm | | | | | 30,50 | 17,00 | | | | |
| | | 22,50 | 12,54 | lbf•ft | | | | | 22,50 | 12,54 | | | | |
| 10 | 38,20 | 21,30 | Nm | | | | | | | 38,20 | 21,30 | | | |
| | 28,17 | 15,71 | lbf•ft | | | | | | | 28,17 | 15,71 | | | |
| 12 | 45,00 | 25,50 | Nm | | | | | | | | | 45,00 | 25,50 | |
| | 33,19 | 18,81 | lbf•ft | | | | | | | | | 33,19 | 18,81 | |
| SR 75/(35) | 4 | 25,00 | 13,50 | Nm | 25,00 | 13,50 | | | | | | | | |
| | | 18,44 | 9,96 | lbf•ft | 18,44 | 9,96 | | | | | | | | |
| | 6 | 37,50 | 20,30 | Nm | | | 37,50 | 20,30 | | | | | | |
| | | 27,66 | 14,97 | lbf•ft | | | 27,66 | 14,97 | | | | | | |
| | 8 | 50,10 | 27,10 | Nm | | | | | 50,10 | 27,10 | | | | |
| | | 36,95 | 19,99 | lbf•ft | | | | | 36,95 | 19,99 | | | | |
| 10 | 62,66 | 33,93 | Nm | | | | | | | 62,66 | 33,93 | | | |
| | 46,22 | 25,03 | lbf•ft | | | | | | | 46,22 | 25,03 | | | |
| 12 | 75,00 | 35,00 | Nm | | | | | | | | | 75,00 | 35,00 | |
| | 55,32 | 25,81 | lbf•ft | | | | | | | | | 55,32 | 25,81 | |
| SR 189/(104) | 4 | - | - | Nm | - | - | | | | | | | | |
| | | - | - | lbf•ft | - | - | | | | | | | | |
| | 6 | - | - | Nm | | | - | - | | | | | | |
| | | - | - | lbf•ft | | | - | - | | | | | | |
| | 8 | - | - | Nm | | | - | - | | | | | | |
| | | - | - | lbf•ft | | | - | - | | | | | | |
| 10 | - | - | Nm | | | | | | | - | - | | | |
| | - | - | lbf•ft | | | | | | | - | - | | | |
| 12 | - | - | Nm | | | | | | | | | - | - | |
| | - | - | lbf•ft | | | | | | | | | - | - | |
| SR 202/(107) | 4 | - | - | Nm | - | - | | | | | | | | |
| | | - | - | lbf•ft | - | - | | | | | | | | |
| | 6 | - | - | Nm | | | - | - | | | | | | |
| | | - | - | lbf•ft | | | - | - | | | | | | |
| | 8 | - | - | Nm | | | - | - | | | | | | |
| | | - | - | lbf•ft | | | - | - | | | | | | |
| 10 | - | - | Nm | | | | | | | - | - | | | |
| | - | - | lbf•ft | | | | | | | - | - | | | |
| 12 | - | - | Nm | | | | | | | | | - | - | |
| | - | - | lbf•ft | | | | | | | | | - | - | |

SR ACTUATORS (SPRING RETURN)

| TYPE | ISO5211 | A | C | E | F | G | M | N | ØS | T | ØV | U | X | Y | SW | WEIGHT | ITEM CODE | |
|-------|---------|------|-------|------|------|------|-------|------|------|-----|------|----|------|------|------|--------|-----------|-----------------|
| SR20 | F03/F05 | mm | 195 | 52 | 20 | 72 | 63,5 | 32 | 24 | M6 | 50 | M5 | 36 | G1/8 | M5X8 | 11 | kg 0,85 | FATAAJSR020AA0H |
| | | inch | 7,68 | 2,05 | 0,79 | 2,83 | 2,50 | 1,26 | 0,94 | M6 | 1,97 | M5 | 1,42 | G1/8 | M5X8 | 0,43 | lb 1,87 | |
| SR35 | F05/F07 | mm | 219 | 65 | 20 | 85 | 82 | 32 | 24 | M8 | 70 | M6 | 50 | G1/8 | M5X8 | 14 | kg 1,325 | FATAAJSR035AA0H |
| | | inch | 8,62 | 2,56 | 0,79 | 3,35 | 3,23 | 1,26 | 0,94 | M8 | 2,76 | M6 | 1,97 | G1/8 | M5X8 | 0,55 | lb 2,92 | |
| SR70 | F05/F07 | mm | 300 | 80 | 20 | 100 | 96 | 32 | 24 | M8 | 70 | M6 | 50 | G1/8 | M5X8 | 17 | kg 3,25 | FATAAJSR070AA0H |
| | | inch | 11,81 | 3,15 | 0,79 | 3,94 | 3,78 | 1,26 | 0,94 | M8 | 2,76 | M6 | 1,97 | G1/8 | M5X8 | 0,67 | lb 7,17 | |
| SR200 | F07/F10 | mm | 410 | 110 | 20 | 130 | 130,5 | 32 | 24 | M10 | 102 | M8 | 70 | G1/8 | M5X8 | 22 | kg 7,15 | FATAAJSR200AA0H |
| | | inch | 16,14 | 4,33 | 0,79 | 5,12 | 5,14 | 1,26 | 0,94 | M10 | 4,02 | M8 | 2,76 | G1/8 | M5X8 | 0,87 | lb 15,76 | |

TORQUES (NM) ACTUATOR SPRING RETURN

| TYPE | AIR SUPPLY | | Nm | lbf-ft |
|--------------|------------|-----|------|--------|
| | MPa | 0,6 | | |
| SR 11/(8) | Psi | 87 | 10,8 | 7,97 |
| | MPa | 0,6 | | |
| SR 23/(13) | Psi | 87 | 22,5 | 16,60 |
| | MPa | 0,6 | | |
| SR 45/(26) | Psi | 87 | 45 | 33,19 |
| | MPa | 0,6 | | |
| SR 75/(35) | Psi | 87 | 75 | 55,32 |
| | MPa | 0,6 | | |
| SR 189/(104) | Psi | 87 | - | - |
| | MPa | 0,6 | | |
| SR 202/(107) | Psi | 87 | - | - |
| | MPa | 0,6 | | |



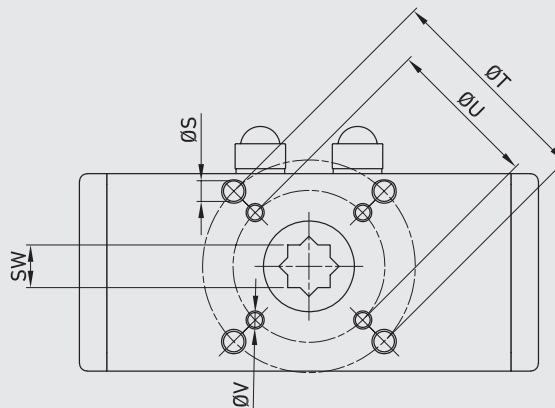
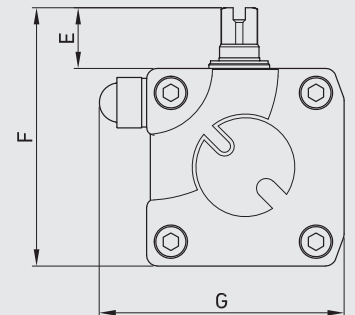
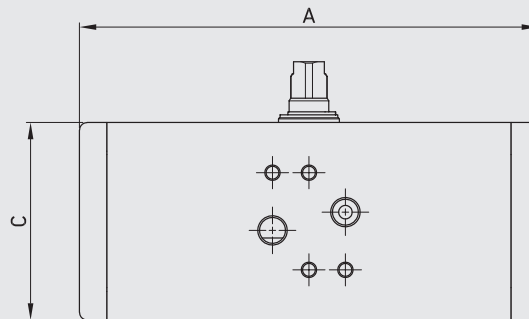


**ULTRA COMPACT
SCOTCH-YOKE
PNEUMATIC
ACTUATORS DA**

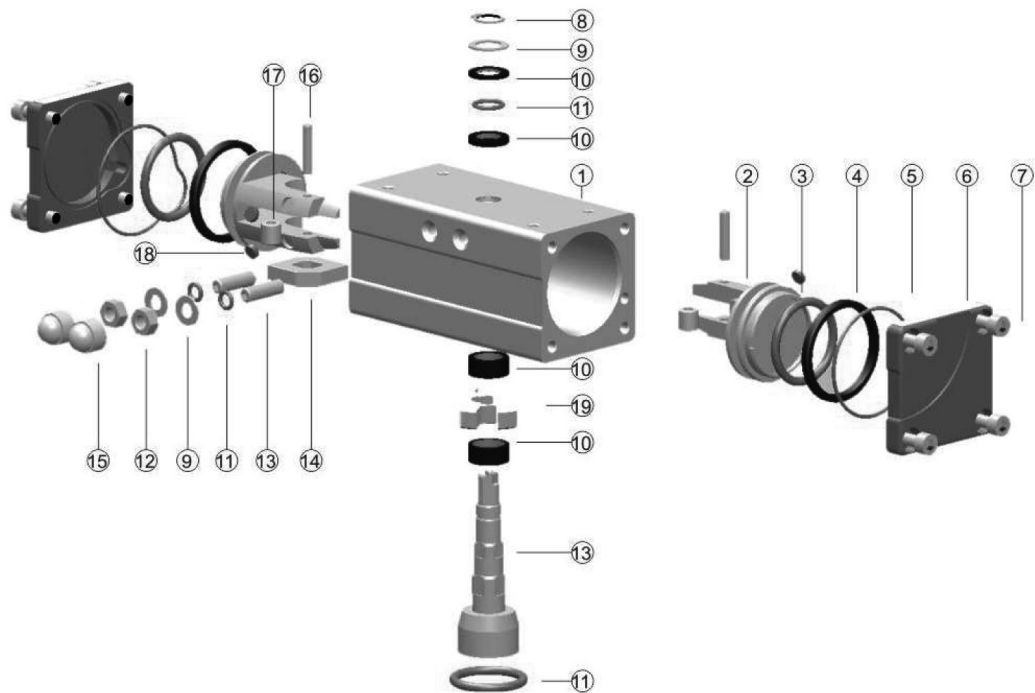
- Port "A" Air to open (anti clockwise)
- Port "B" Air to close (clockwise)
- Air supply: 6 bar; maximum 8 bar
- Drive Medium = Air (Dry or lubricated); not corrosive Gas; light hydraulic oil
- Temperature = -50° to 160°C or -58 to 320° F
- Standard indicator position

- ATEX certification

HIGH CYCLICITY



ULTRA COMPACT SCOTCH-YOKE ACTUATORS



| REF NO | DESCRIPTION | QTY | MATERIAL STD UNIT | COMMENTS |
|--------|---------------------------|-----|-------------------|---------------------|
| 1 | Cylinder Body | 1 | Aluminium | |
| 2 | Piston | 2 | Aluminium | |
| 3 | O-ring piston | 2 | Buna Nitrile | Alt. VITON/Silikone |
| 4 | Glide band piston | 2 | PTFE Carbon | |
| 5 | Sealing end caps | 2 | Buna Nitrile | Alt. VITON/Silikone |
| 6 | End caps epoxy | 2 | Aluminium | |
| 7 | Screw end caps | 8 | DIN921 1.4301 | Alt. AISI 304-A2 |
| 8 | Retaining ring | 1 | DIN471 1.4301 | Alt. AISI 304-A2 |
| 9 | Shim ring | 1 | DIN988 1.4301 | Alt. AISI 304-A2 |
| 10 | Glide and distance rings | 4 | PTFE Carbon | |
| 11 | O-rings | 2 | Buna Nitrile | Alt. VITON/Silikone |
| 12 | Hexagon nuts | 2 | DIN934 1.4301 | Alt. AISI 304-A2 |
| 13 | Hexagon socket set screws | 2 | ISO4026 1.4301 | Alt. AISI 304-A2 |
| 14 | Travel stop disc | 1 | C10 | |
| 15 | Protective cap for nut | 2 | LLD-PE | |
| 16 | Parallel pin | 2 | DIN6325 Steel | |
| 17 | Press fit bushes | 2 | DIN179 Steel | |
| 18 | Glide support piston | 2 | PTFE Carbon | |
| 19 | Crank | 1 | C10 | |

TORQUES (NM) ACTUATOR DOUBLE ACTING

| | | AIR SUPPLY | | | | | | |
|--------|--------|------------|--------|--------|--------|--------|--------|--------|
| MODEL | Mpa | 0,3 | 0,4 | 0,5 | 0,56 | 0,6 | 0,7 | 0,8 |
| DA 10 | PSI | 43,5 | 58 | 72,5 | 81,2 | 87 | 101,5 | 116 |
| | Nm | 6,4 | 8,5 | 10,6 | 11,9 | 12,8 | 14,9 | 17 |
| | lbf-ft | 4,72 | 6,27 | 7,82 | 8,78 | 9,44 | 10,99 | 12,54 |
| | | | | | | | | |
| DA 35 | Nm | 17,8 | 23,7 | 29,7 | 33,2 | 35,6 | 41,6 | 47,5 |
| | lbf-ft | 13,13 | 17,48 | 21,91 | 24,49 | 26,26 | 30,68 | 35,03 |
| DA 75 | Nm | 38 | 50,7 | 63,4 | 71 | 76,1 | 88,8 | 101,5 |
| | lbf-ft | 28,03 | 37,39 | 46,76 | 52,37 | 56,13 | 65,50 | 74,86 |
| DA 135 | Nm | 67,7 | 90,3 | 112,9 | 126,5 | 135,5 | 158,1 | 180,7 |
| | lbf-ft | 49,93 | 66,60 | 83,27 | 93,30 | 99,94 | 116,61 | 133,28 |
| DA 520 | Nm | 259,4 | 345,9 | 432,4 | 484,2 | 518,8 | 605,3 | 691,8 |
| | lbf-ft | 191,32 | 255,12 | 318,92 | 357,13 | 382,65 | 446,45 | 510,24 |

MAXIMUM OPERATING TIME PER SECOND (0.55 MPAG / 80 PSIG)

| Actuator Size | DA10 | DA35 | DA75 | DA135 | DA520 |
|---------------|------|------|------|-------|-------|
| DA open | <1 | <1 | <1 | <1 | <1 |
| DA close | <1 | <1 | <1 | <1 | <1 |
| SR open | <1 | <1 | <1 | <1 | <1 |
| SR close | <1 | <1 | <1 | <1 | <1 |

AIR CONSUMPTION PER STROKE

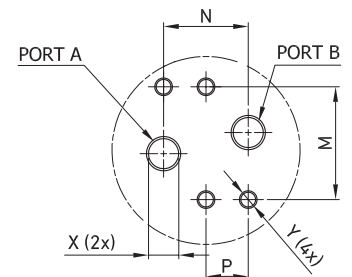
| Actuator Size | DA10 | DA35 | DA75 | DA135 | DA520 |
|--------------------------------|------|------|------|-------|-------|
| Port 'A' to open (liters) | 0,03 | 0,14 | 0,28 | 0,55 | 1,75 |
| Port 'B' to close (liters) | 0,03 | 0,14 | 0,28 | 0,55 | 1,75 |
| Port 'A' to open (cubic inch) | 1,8 | 8,5 | 17,1 | 33,6 | 106,8 |
| Port 'B' to close (cubic inch) | 1,8 | 8,5 | 17,1 | 33,6 | 106,8 |

DA ACTUATORS (DOUBLE ACTING)

| TYPE | ISO5211 | A | C | E | F | G | M | N | ØS | T | ØV | U | X | Y | SW | WEIGHT | ITEM CODE | |
|-------|---------|------|-------|------|------|------|-------|------|------|-----|------|----|------|------|------|--------|-----------|-----------------|
| DA10 | F03 | mm | 76 | 45 | 20 | 65 | 55 | 32 | 24 | M5 | 36 | - | - | G1/8 | M5X8 | 9 | kg 0,29 | FATAAJDA010AA0H |
| | | inch | 2,99 | 1,77 | 0,79 | 2,56 | 2,17 | 1,26 | 0,94 | | 1,42 | | | | | 0,35 | lb 0,64 | |
| DA35 | F03/F05 | mm | 122 | 52 | 20 | 72 | 65 | 32 | 24 | M6 | 50 | M5 | 36 | G1/8 | M5X8 | 11 | kg 0,75 | FATAAJDA035AA0H |
| | | inch | 4,80 | 2,05 | 0,79 | 2,83 | 2,56 | 1,26 | 0,94 | | 1,97 | | 1,42 | | | 0,43 | lb 1,65 | |
| DA75 | F05/F07 | mm | 151 | 65 | 20 | 85 | 81 | 32 | 24 | M8 | 70 | M6 | 50 | G1/8 | M5X8 | 14 | kg 1,32 | FATAAJDA075AA0H |
| | | inch | 5,94 | 2,56 | 0,79 | 3,35 | 3,19 | 1,26 | 0,94 | | 2,76 | | 1,97 | | | 0,55 | lb 2,91 | |
| DA135 | F05/F07 | mm | 198 | 80 | 20 | 100 | 96 | 32 | 24 | M8 | 70 | M6 | 50 | G1/8 | M5X8 | 17 | kg 2,5 | FATAAJDA135AA0H |
| | | inch | 7,80 | 3,15 | 0,79 | 3,94 | 3,78 | 1,26 | 0,94 | | 2,76 | | 1,97 | | | 0,67 | lb 5,51 | |
| DA520 | F07/F10 | mm | 270 | 110 | 20 | 130 | 130,5 | 32 | 24 | M10 | 102 | M8 | 70 | G1/8 | M5X8 | 22 | kg 6,25 | FATAAJDA520AA0H |
| | | inch | 10,63 | 4,33 | 0,79 | 5,12 | 5,14 | 1,26 | 0,94 | | 4,02 | | 2,76 | | | 0,87 | lb 13,78 | |

TORQUES (NM) ACTUATOR DOUBLE ACTING

| TYPE | AIR SUPPLY | | Nm | lbf-ft |
|-------|------------|-----|-------|--------|
| | MPa | Psi | | |
| DA10 | 0,6 | 87 | 12,8 | 9,44 |
| | | | | |
| DA35 | 0,6 | 87 | 35,6 | 26,26 |
| | | | | |
| DA75 | 0,6 | 87 | 76,1 | 56,13 |
| | | | | |
| DA135 | 0,6 | 87 | 135,5 | 99,94 |
| | | | | |
| DA520 | 0,6 | 87 | 518,8 | 382,65 |
| | | | | |

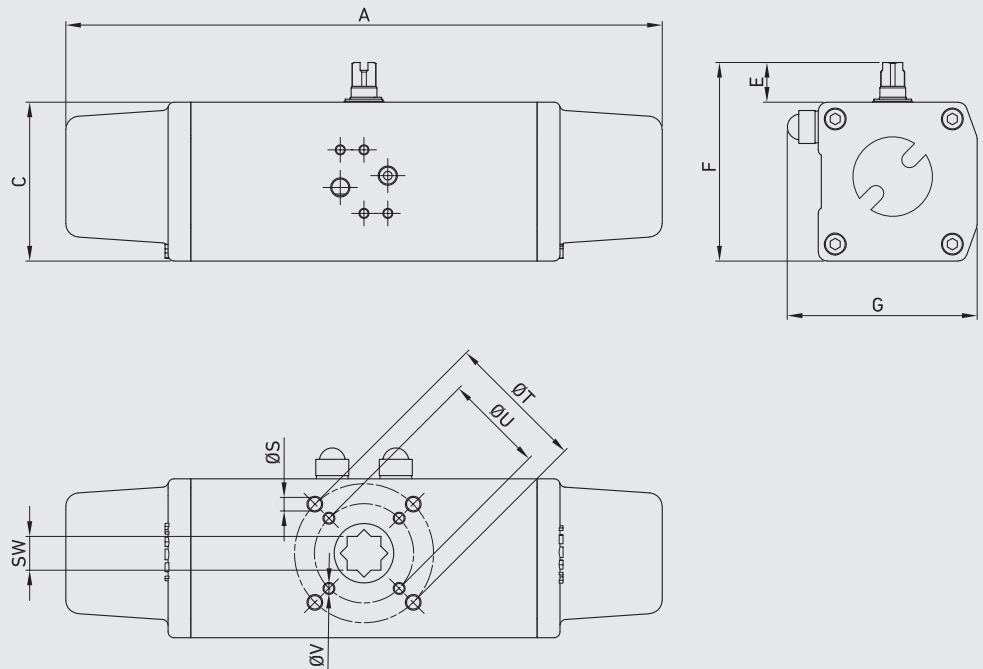




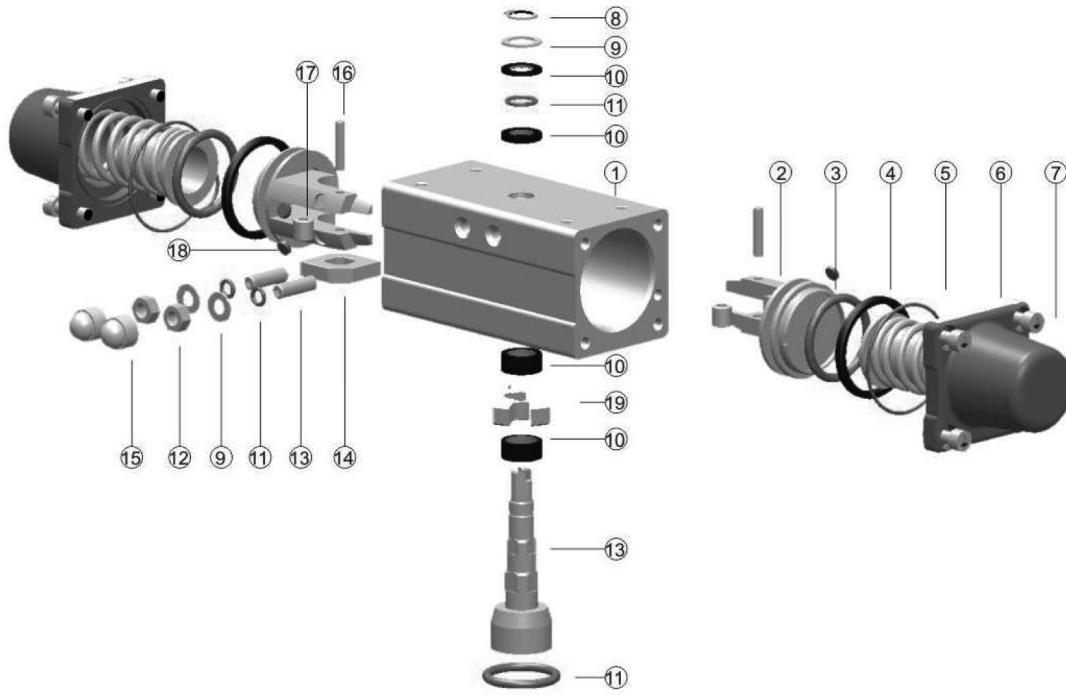
ULTRA COMPACT SCOTCH-YOKE PNEUMATIC ACTUATORS SR

- Port "A" Air to open (anti clockwise)
- Port "B" Air to close (clockwise)
- Air supply: 6 bar; maximum 8 bar
- Drive Medium = Air (Dry or lubricated); not corrosive Gas; light hydraulic oil
- Temperature= -50° to 160°C or -58 to 320° F
- Standard indicator position

- ATEX certification



ULTRA COMPACT SCOTCH-YOKE ACTUATORS



| REF NO | DESCRIPTION | QTY | MATERIAL STD UNIT | COMMENTS |
|--------|---------------------------|-----|-------------------|---------------------|
| 1 | Cylinder Body | 1 | Aluminium | |
| 2 | Piston | 2 | Aluminium | |
| 3 | O-ring piston | 2 | Buna Nitrile | Alt. VITON/Silikone |
| 4 | Glide band piston | 2 | PTFE Carbon | |
| 5 | Sealing end caps | 2 | Buna Nitrile | Alt. VITON/Silikone |
| 6 | End caps epoxy | 2 | Aluminium | |
| 7 | Screw end caps | 8 | DIN921 1.4301 | Alt. AISI 304-A2 |
| 8 | Retaining ring | 1 | DIN471 1.4301 | Alt. AISI 304-A2 |
| 9 | Shim ring | 1 | DIN988 1.4301 | Alt. AISI 304-A2 |
| 10 | Glide and distance rings | 4 | PTFE Carbon | |
| 11 | O-rings | 2 | Buna Nitrile | Alt. VITON/Silikone |
| 12 | Hexagon nuts | 2 | DIN934 1.4301 | Alt. AISI 304-A2 |
| 13 | Hexagon socket set screws | 2 | ISO4026 1.4301 | Alt. AISI 304-A2 |
| 14 | Travel stop disc | 1 | C10 | |
| 15 | Protective cap for nut | 2 | LLD-PE | |
| 16 | Parallel pin | 2 | DIN6325 Steel | |
| 17 | Press fit bushes | 2 | DIN179 Steel | |
| 18 | Glide support piston | 2 | PTFE Carbon | |
| 19 | Crank | 1 | C10 | |

TORQUES (NM) ACTUATOR SPRING RETURN

| | | AIR SUPPLY | | | | | | |
|--------|--------|------------|-----|------|-------|--------|-------|-----|
| MODEL | Mpa | 0,3 | 0,4 | 0,5 | 0,55 | 0,6 | 0,7 | 0,8 |
| | PSI | 43,5 | 58 | 72,5 | 79,75 | 87 | 101,5 | 116 |
| SR 20 | Nm | - | - | - | - | 21,6 | - | - |
| | lbf-ft | - | - | - | - | 15,93 | - | - |
| SR 42 | Nm | - | - | - | - | 42 | - | - |
| | lbf-ft | - | - | - | - | 30,98 | - | - |
| SR 70 | Nm | - | - | - | - | 70,2 | - | - |
| | lbf-ft | - | - | - | - | 51,78 | - | - |
| SR 200 | Nm | - | - | - | - | 201,4 | - | - |
| | lbf-ft | - | - | - | - | 148,54 | - | - |

MAXIMUM OPERATING TIME PER SECOND (0.55 MPAG / 80 PSIG)

| Actuator Size | SR20 | SR42 | SR70 | SR200 |
|---------------|------|------|------|-------|
| DA open | <1 | <1 | <1 | <1 |
| DA close | <1 | <1 | <1 | <1 |
| SR open | <1 | <1 | <1 | <1 |
| SR close | <1 | <1 | <1 | <1 |

AIR CONSUMPTION PER STROKE

| Actuator Size | SR20 | SR42 | SR70 | SR200 |
|--------------------------------|------|------|------|-------|
| Port 'A' to open (liters) | 0,08 | 0,28 | 0,32 | 1 |
| Port 'B' to close (liters) | 0,08 | 0,28 | 0,32 | 1 |
| Port 'A' to open (cubic inch) | 4,9 | 17,1 | 19,5 | 61,0 |
| Port 'B' to close (cubic inch) | 4,9 | 17,1 | 19,5 | 61,0 |

SR ACTUATORS (SPRING RETURN)

| TYPE | ISO5211 | A | C | E | F | G | M | N | ØS | T | ØV | U | X | Y | SW | WEIGHT | ITEM CODE | | |
|-------|---------|------|-------|------|------|------|-------|------|------|-----|------|----|------|------|------|--------|-----------|-------|-----------------|
| SR20 | F03/F05 | mm | 195 | 52 | 20 | 72 | 63,5 | 32 | 24 | M6 | 50 | M5 | 36 | G1/8 | M5X8 | 11 | kg | 0,85 | FATAAJSR020AA0H |
| | | inch | 7,68 | 2,05 | 0,79 | 2,83 | 2,50 | 1,26 | 0,94 | | 1,97 | | 1,42 | | | 0,43 | lb | 1,87 | |
| SR42 | F05/F07 | mm | 231 | 65 | 20 | 85 | 82 | 32 | 24 | M8 | 70 | M6 | 50 | G1/8 | M5X8 | 14 | kg | 1,325 | FATAAJSR042AA0H |
| | | inch | 9,09 | 2,56 | 0,79 | 3,35 | 3,23 | 1,26 | 0,94 | | 2,76 | | 1,97 | | | 0,55 | lb | 2,92 | |
| SR70 | F05/F07 | mm | 300 | 80 | 20 | 100 | 96 | 32 | 24 | M8 | 70 | M6 | 50 | G1/8 | M5X8 | 17 | kg | 3,25 | FATAAJSR070AA0H |
| | | inch | 11,81 | 3,15 | 0,79 | 3,94 | 3,78 | 1,26 | 0,94 | | 2,76 | | 1,97 | | | 0,67 | lb | 7,17 | |
| SR200 | F07/F10 | mm | 410 | 110 | 20 | 130 | 130,5 | 32 | 24 | M10 | 102 | M8 | 70 | G1/8 | M5X8 | 22 | kg | 7,15 | FATAAJSR200AA0H |
| | | inch | 16,14 | 4,33 | 0,79 | 5,12 | 5,14 | 1,26 | 0,94 | | 4,02 | | 2,76 | | | 0,87 | lb | 15,76 | |

TORQUES (NM) ACTUATOR SPRING RETURN

| TYPE | AIR SUPPLY | | Nm | lbf-ft |
|-------|------------|-----|-------|--------|
| SR20 | MPa | 0,6 | 21,6 | 15,93 |
| | Psi | 87 | | |
| SR42 | MPa | 0,6 | 35,7 | 26,33 |
| | Psi | 87 | | |
| SR70 | MPa | 0,6 | 70,2 | 51,78 |
| | Psi | 87 | | |
| SR200 | MPa | 0,6 | 201,4 | 148,54 |
| | Psi | 87 | | |

